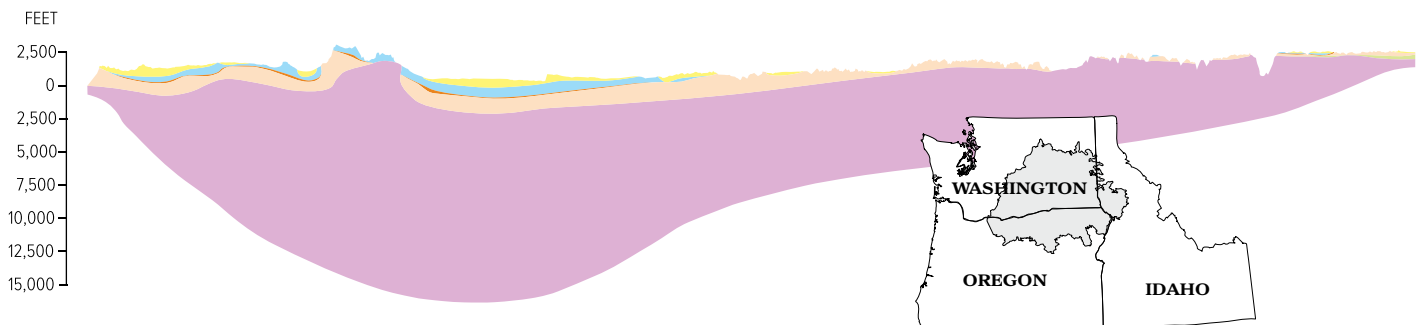


The **Columbia Plateau Regional Aquifer System** is a complex made up of the **Overburden**, **Saddle Mountains**, **Wanapum**, **Grande Ronde**, and **Older Bedrock** hydrogeologic units—which are progressively older in geologic time and therefore found at relatively different depths (below). **Black** dots represent wells pulling from the aquifer system with **red** dots indicating wells that have had to be deepened. There are varying levels of interplay between the aquifers regarding exchange and recharge.



THESE ILLUSTRATIONS ARE BASED ON MODIFICATIONS TO USGS MAPS AND OTHER DIGITAL DATA BY KAHLE ET AL. IN 2009. ASPECTS AND DEPTHS HAVE BEEN MODIFIED FROM ACTUAL SCALE SO AS TO MAKE UNIT RELATIONSHIPS EASIER TO DISTINGUISH. (COMPILED BY WSM STAFF)