

Josh Gilleland | LA 485

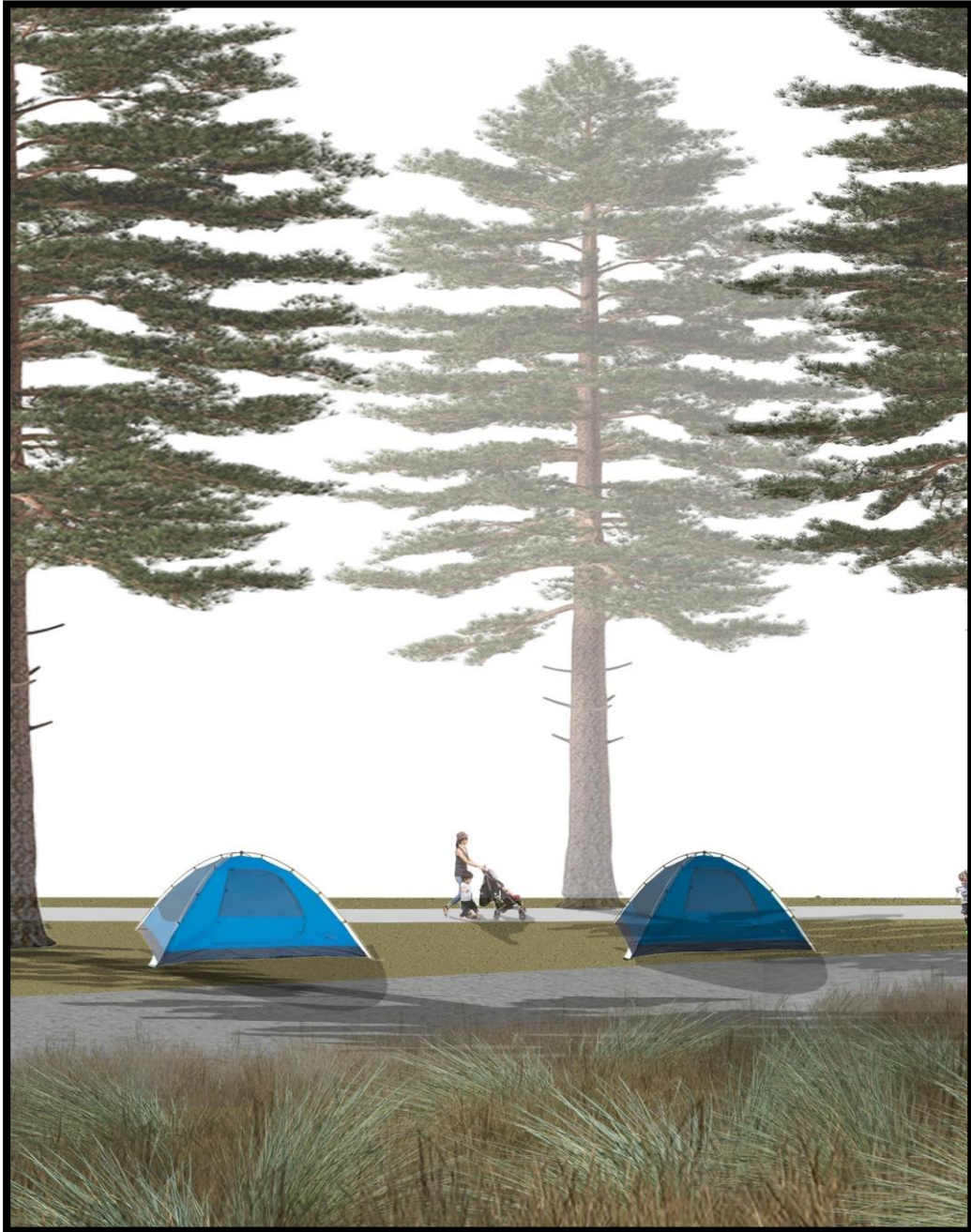
Pine Creek Recreational Area



**Maximize impact,
places, and
possibilities for
personal and
community
progress.**



-Pine Creek Community Long Term Recovery Organization



Project Statement

“The Pine Creek Recreational Area will **create recreational opportunities** that will provide economic growth for infrastructure redevelopment needs in Malden, as well as **restore damaged ecological zones** within the Pine Creek watershed that will promote ecological progression and biodiversity.”



● **Project Site**




● **Malden**

Master Plan

Pine Creek Recreational Area

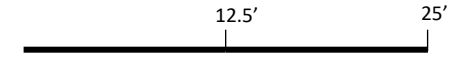
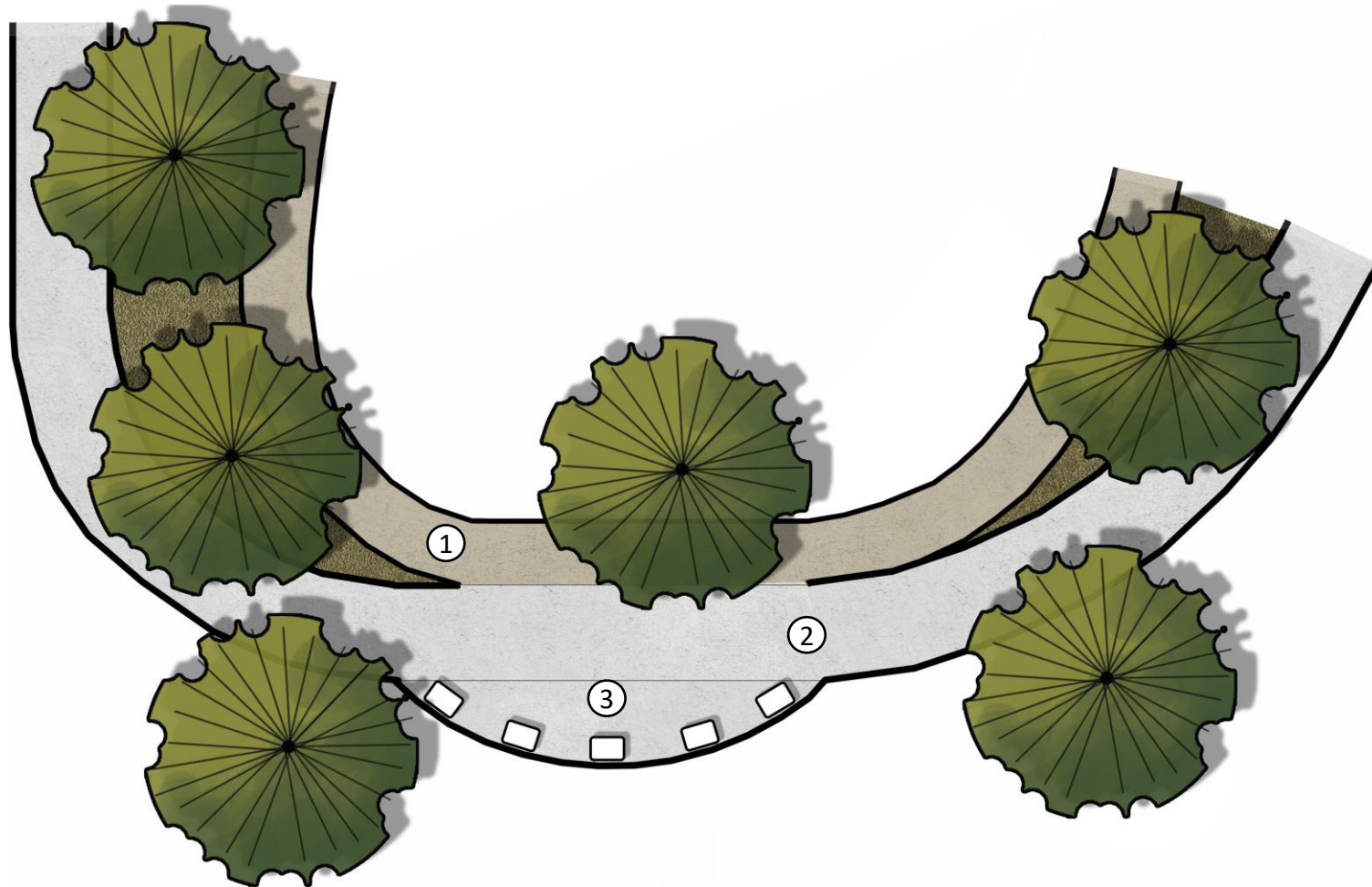


- 1. RV Camping/Parking Area
- 2. Nez Perce/Fire Memorial Plaque
- 3. Tent Campgrounds
- 4. Ecological/Habitat Restoration Areas
- 5. Viewing Platforms
- 6. Footbridges
- 7. Pine Creek

-  Main Bike Route Path
-  Alternative Bike Route Paths
-  Walking Paths

Nez Perce/Fire Memorial Plaque

Enlargement



- 1. Main Walking Path
- 2. Main Bike Route Path
- 3. Plaques and Overlook

RV Camping/Parking Area

Enlargement



1. Site Entrance/Exit (To Malden)

2. Palouse to Cascades Trail

3. RV Camping Area

4. Restroom/Bath House

5. Open Grass/Picnic Area

6. Parking Area

7. Trail Access to Tent Camping/Bike Trails

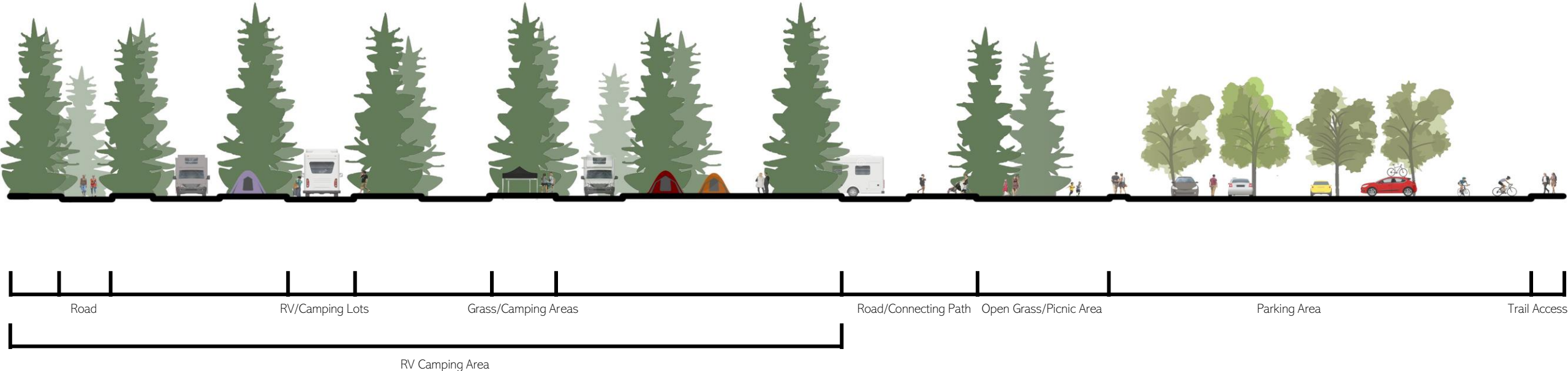
RV Camping/Parking Area

Looking Northeast along Palouse to Cascades Trail viewing RV camping area and connecting trail to bath house and parking area.



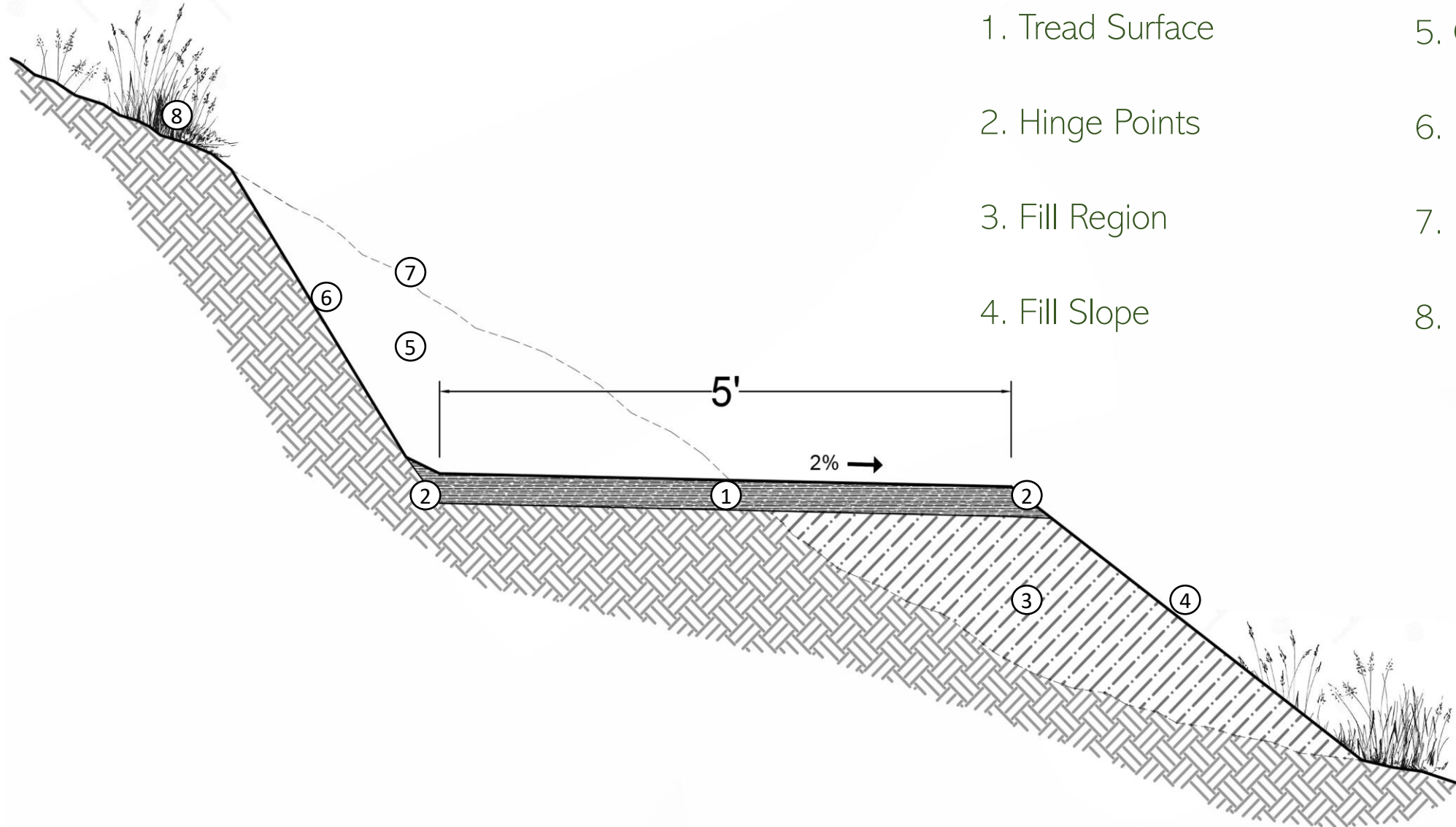
RV Camping/Parking Area

Section - looking North



Standard Bike Route Path

Detail



1. Tread Surface

2. Hinge Points

3. Fill Region

4. Fill Slope

5. Cut Region

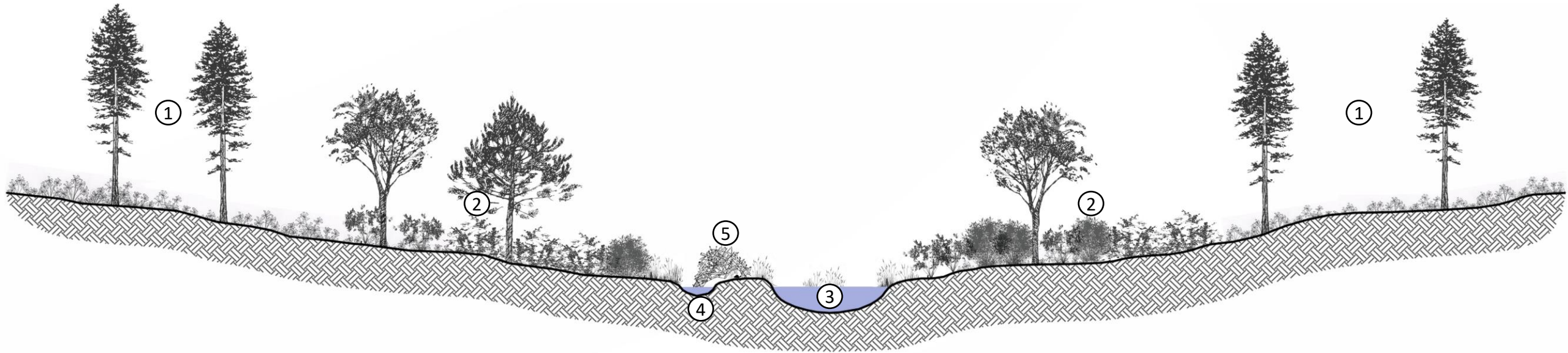
6. Backslope

7. Former Surface Line

8. Existing Surface

Ecological/Habitat Restoration Area

Detail



Beaver Habitat Influence

Introducing beavers into the Pine Creek watershed can help promote biodiversity, increase wetlands and water storage, and protection against erosion and wildfires

1. Riparian Zone of Influence

4. Side Channel

2. Riparian Zone

5. Beaver Habitat

3. Main Channel

THANK YOU!