
A RURAL STANDARD

MALDEN, WASHINGTON

Rhiana Herman | Senior Capstone Spring '23



MALDEN, WA

This project aims to provide a vision of what Malden could look like as a complete city.

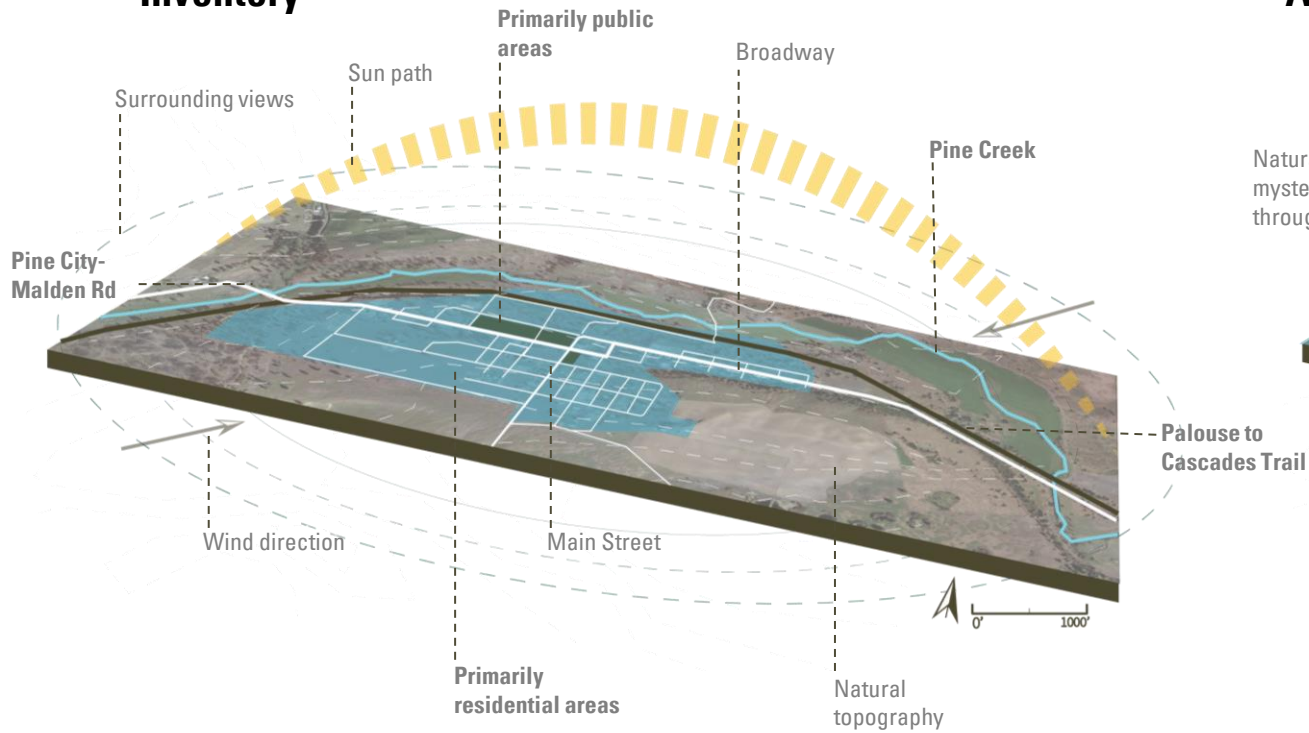
The concept of a complete city is to have access to daily necessities, and in a small town like Malden, it is also walkable.

This complete city concept provides a Rural Standard for achieving the health, safety and well-being of its residents.

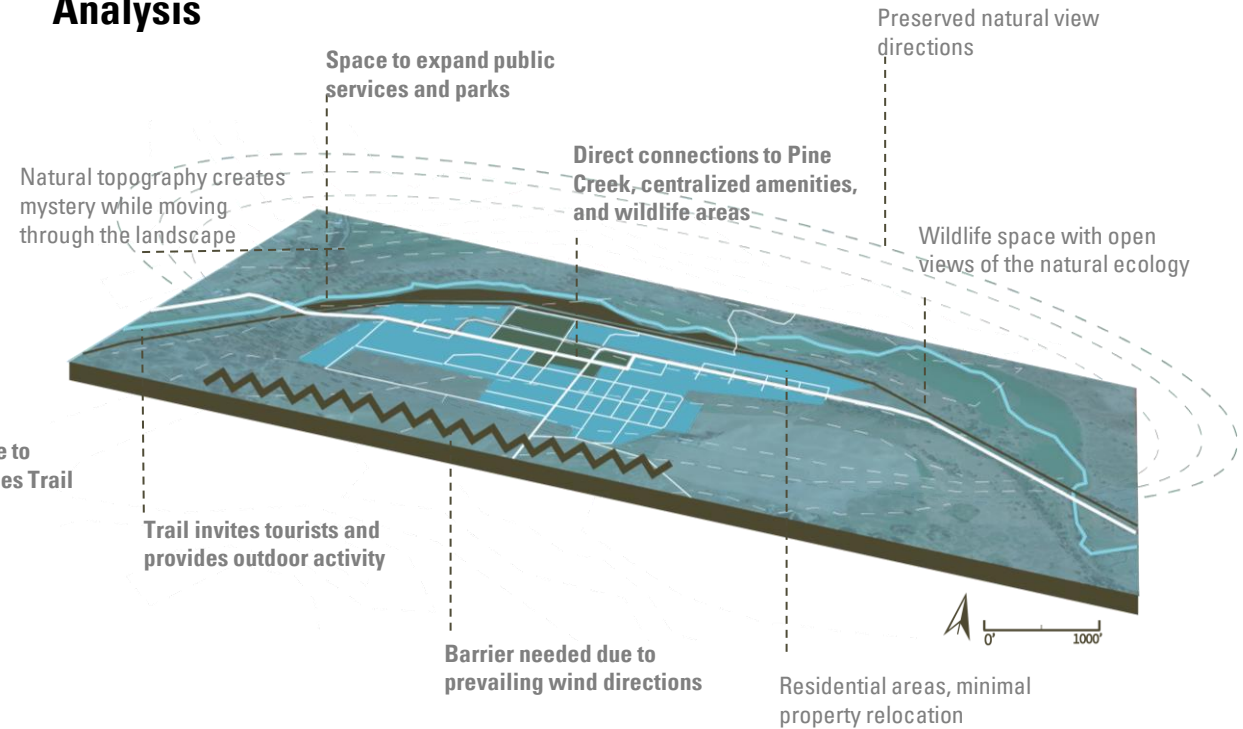


CURRENT CONDITIONS

Inventory



Analysis



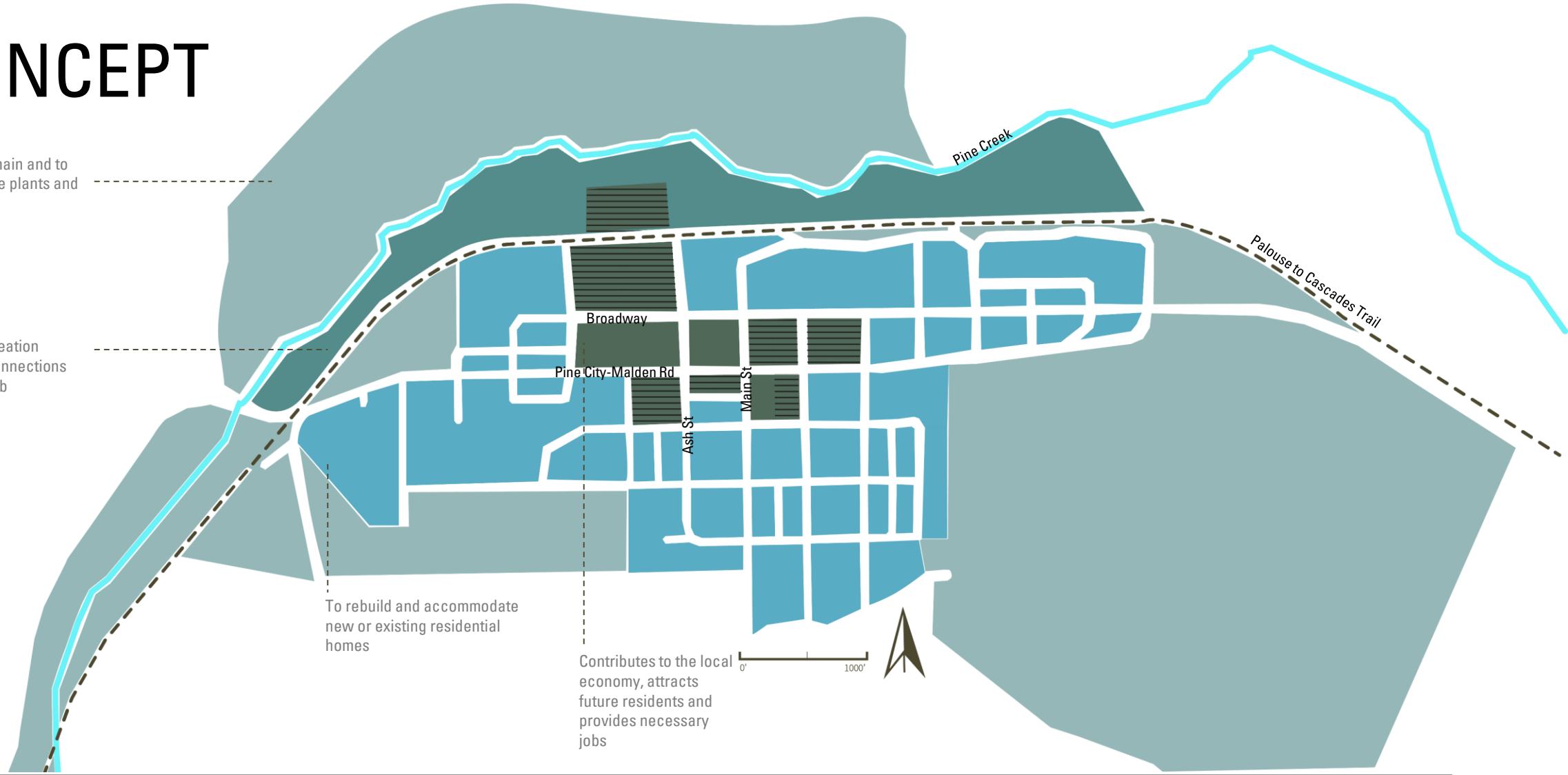
CONCEPT

Landscape to remain and to regenerate, native plants and ecology

Tourism and recreation amenities with connections to commercial hub

To rebuild and accommodate new or existing residential homes

Contributes to the local economy, attracts future residents and provides necessary jobs



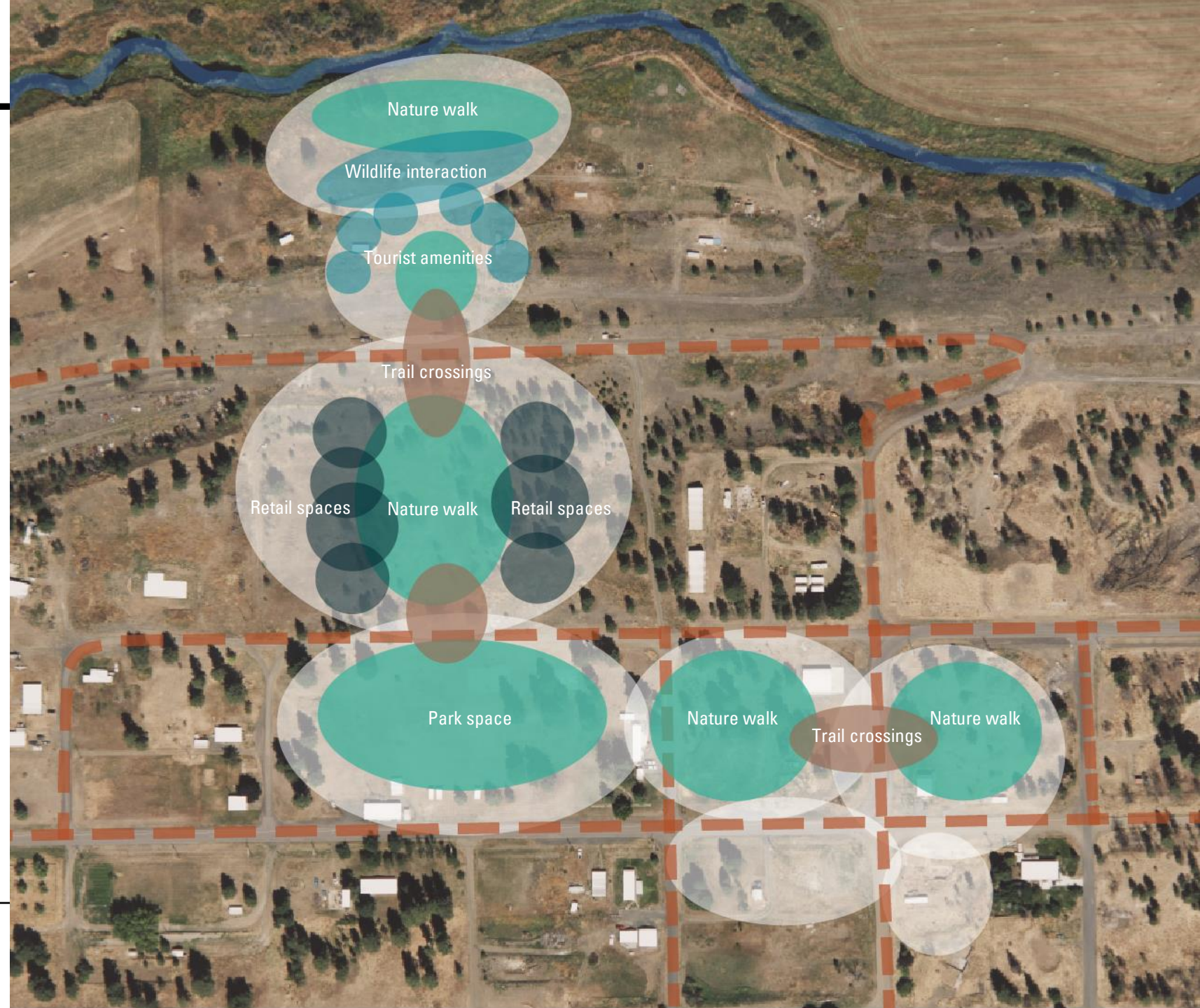
PROGRAM

- Gathering
- Parks and recreation



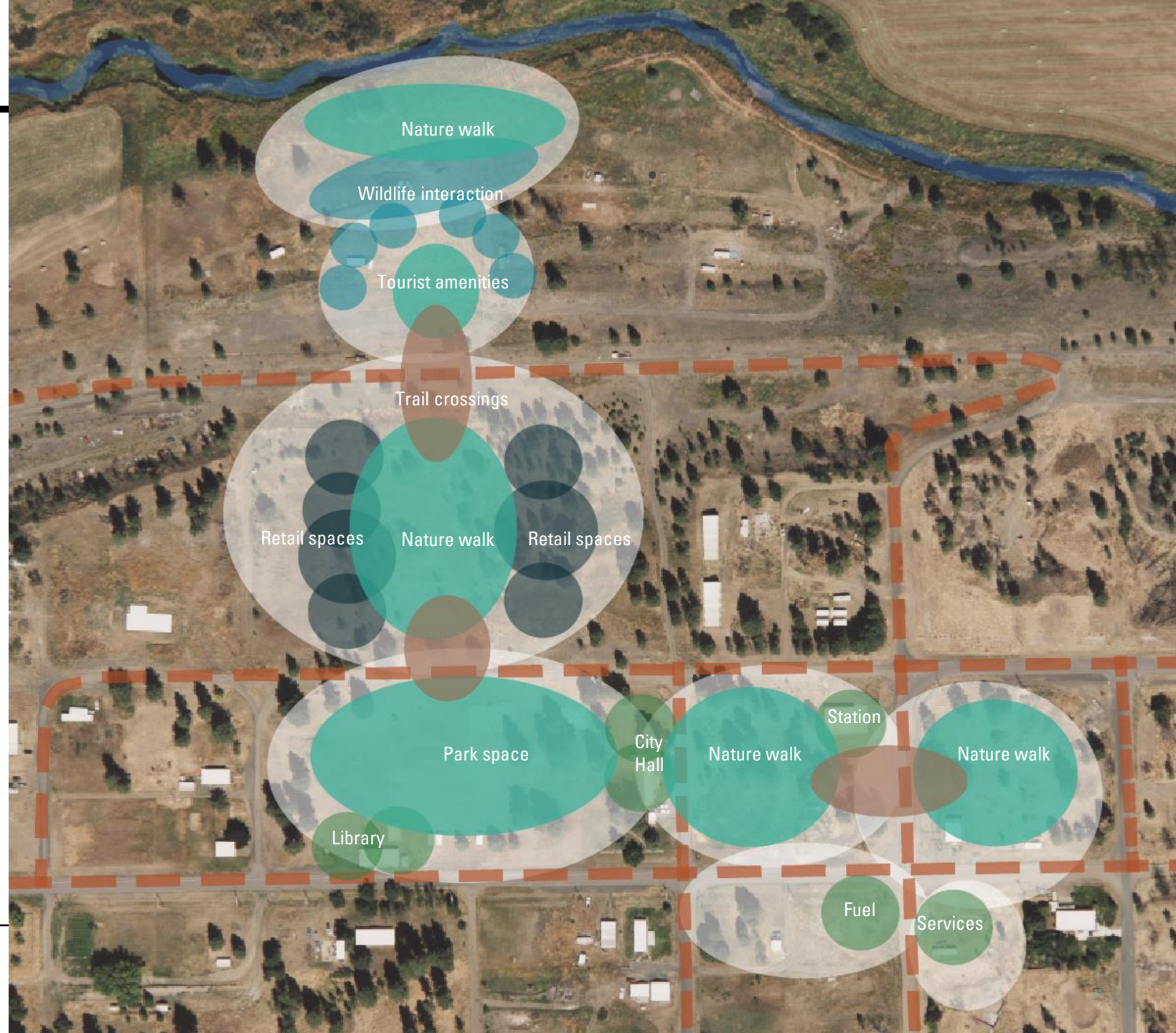
PROGRAM

- Food
- Bar
- Retail
- Gathering
- Parks and recreation



PROGRAM

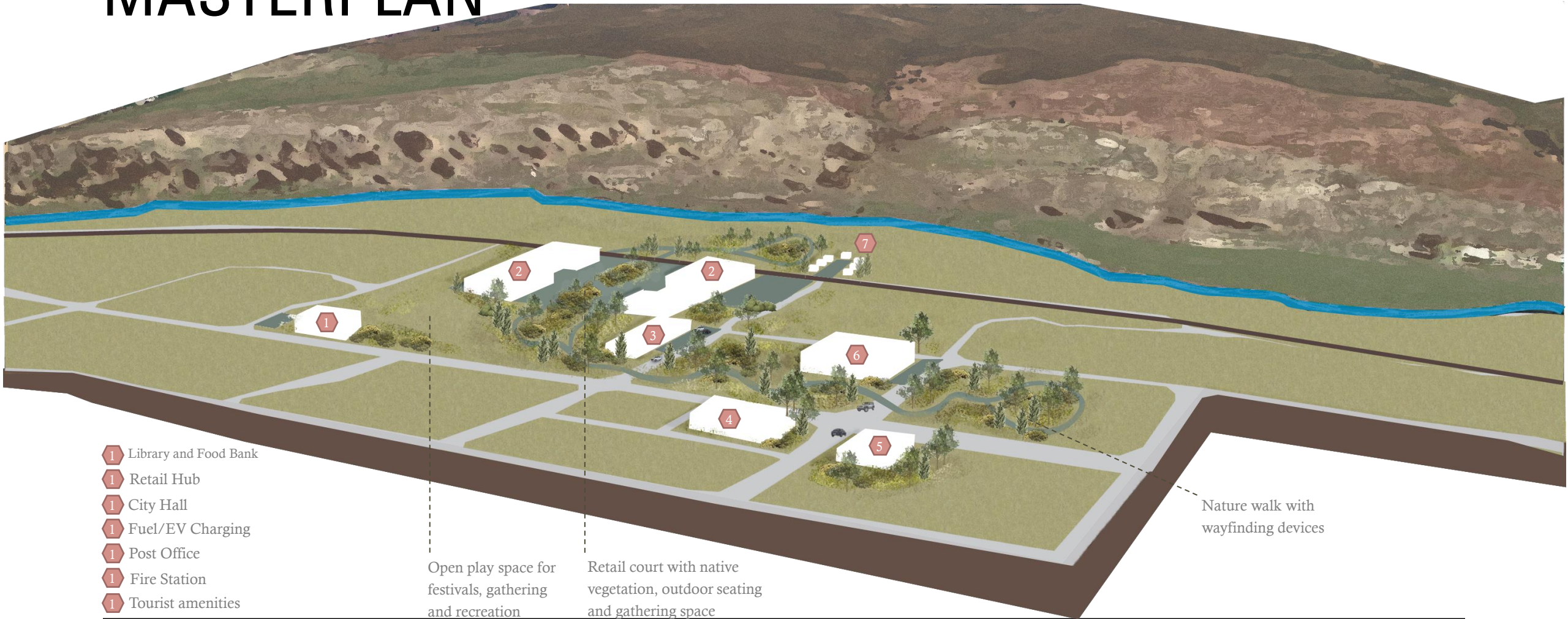
- Emergency services
 - Food
 - Bar
 - Retail
 - Gathering
 - Parks and recreation
 - Government buildings
 - Library
 - Trail system
 - Fuel
-



LOOK & FEEL



MASTERPLAN



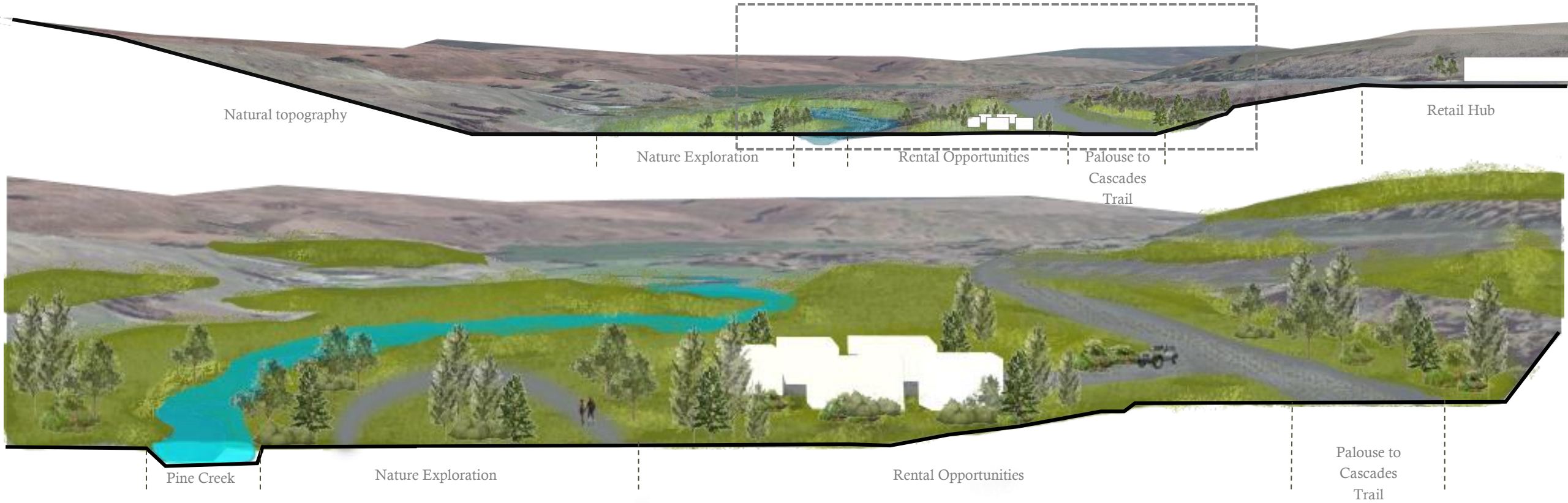
- 1 Library and Food Bank
- 1 Retail Hub
- 1 City Hall
- 1 Fuel/EV Charging
- 1 Post Office
- 1 Fire Station
- 1 Tourist amenities

Open play space for festivals, gathering and recreation

Retail court with native vegetation, outdoor seating and gathering space

Nature walk with wayfinding devices

SECTION OF RECREATION AREA



LET'S TAKE A WALK...

Retail Hub Outdoor Gathering Space



Nature Walk



A rural standard uses other cities with similar populations, disasters, and needs to envision a plan for thriving in this environment. The unique landscape and lack of necessities provides the best opportunity for tourist accommodations, and essential businesses. These will boost local economy and ultimately help Malden get back on their feet.
