

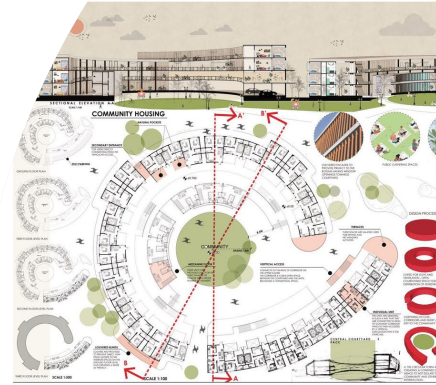


THE NEW HEART OF MALDEN

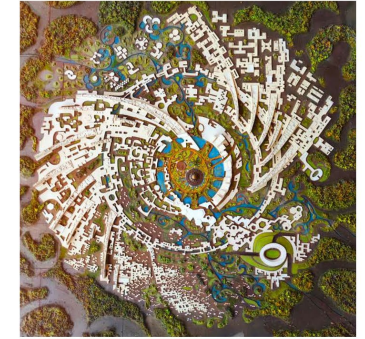
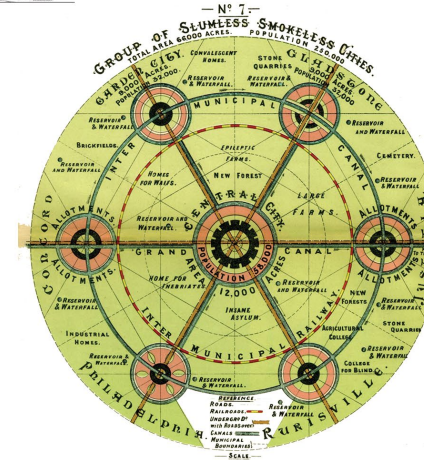
OSCAR AGAPITO

PROJECT INTENTION

- Connect the community & work together
- Community health & well being
- Rebuild local economy



CIRCLE CORE



DISCUSSION OF DESIGN/PLANNING INTENT

DOWNTOWN CENTRAL PLAZA



- Mixed use buildings
- Social gatherings
- Essential services

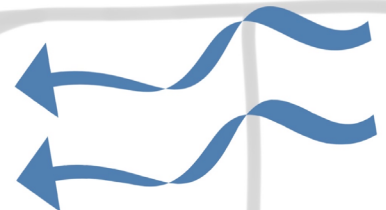
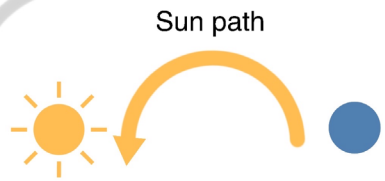
- Accessibility
- Open Spaces
- Repopulation



COMMUNITY

SITE ANALYSIS

Site connected to park
Connection to new town hall
Mixed use buildings will help drive economy and housing
Retail
Memorial space
Potential health clinic



Wind block with mixed use build



Wind in from summer winds to create a cool breeze



MASTER PLAN

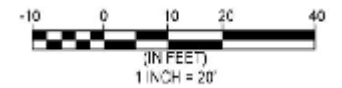
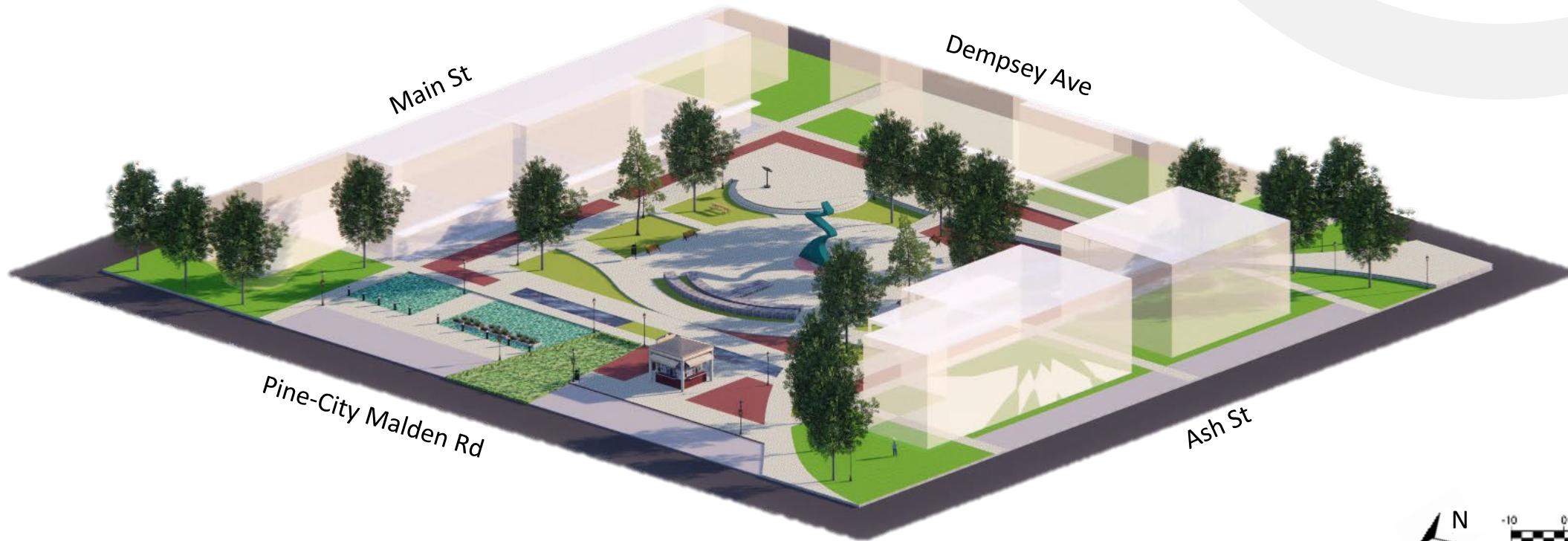


LEGEND

1. Public Art
2. Plaza
3. Rain Garden
4. Splash Area
5. Restroom
6. Amphitheater
7. Pathway
8. Event Platform
9. Mixed-use Buildings



3D MODEL



OVERVIEW FROM ENTRANCE

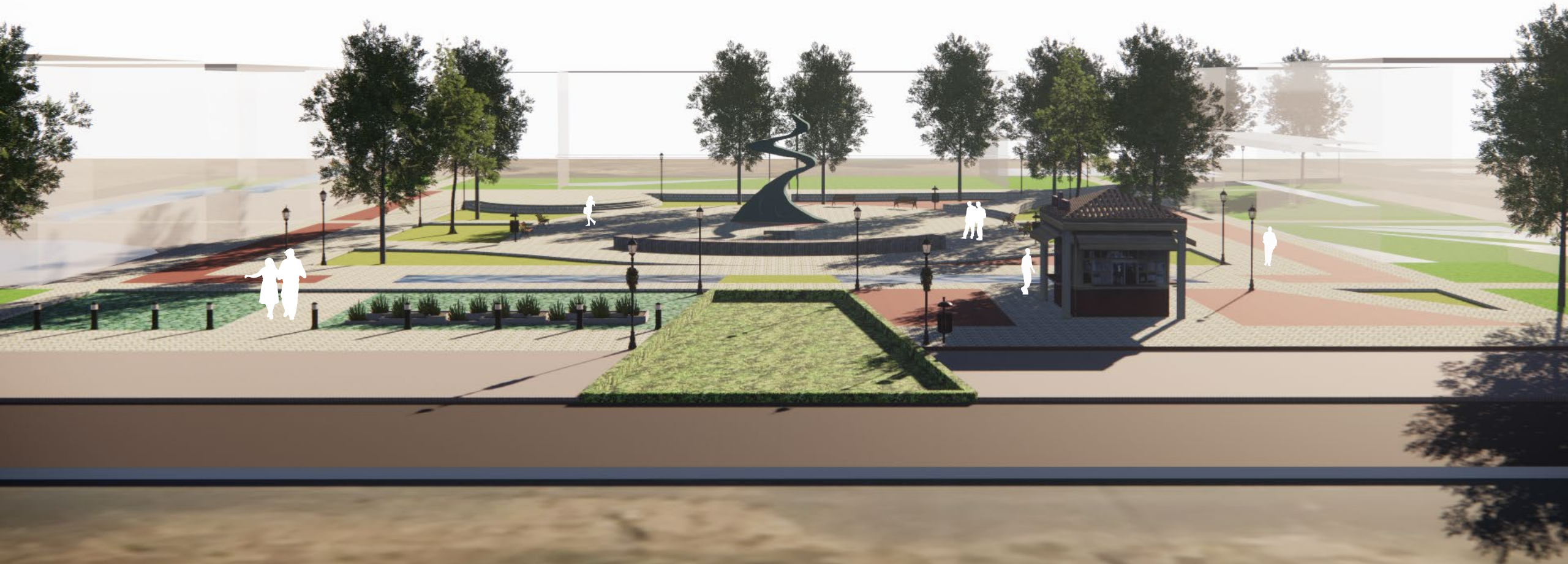


Image highlights rain garden, visitor center/bathroom, splash area parking, event space, amphitheater and public art sculpture

ENTRANCE FROM PINE-CITY MALDEN RD



Image highlights rain garden, visitor center/bathroom, splash area, and parking.

PERSPECTIVE OF WEST VIEW OF PLAZA



Image highlights the public art sculpture, amphitheater, gathering space, and mixed-use buildings.

PERSPECTIVE OF EVENT SPACE



Image highlights permeable paver event space, wooden picnic table, public art sculpture, and restroom

PERSPECTIVE OF CONNECTIVE PATHWAY



Image highlights access to summer winds and direct access from Demsey Ave/Ash St.



THANK YOU
