

# WELCOME

This site is designed as a central hub for fire-wise information & design inspiration curated for Malden & Pine City landowners.

Click here for:



FIRE-WISE INFO.

Click here for:



DESIGN INSPO.



# Intention

Overwhelming information and lists on fire-wise methods and plant choices

Navigation and tracking all the data becomes stressful

Inspired the process of making access to this information easier

GROUNDCOVERS	
SCIENTIFIC NAME	COMMON NAME
<i>Aegopodium podagraria</i>	Bishop's weed
<i>Ajuga reptans</i>	Carpet bugleweed
<i>Antennaria dioica</i>	Rubra pussytoes
<i>Antennaria microphylla</i>	Little-leaf pussytoes
<i>Antennaria parvifolia</i>	Small-leaf pussytoes
<i>Antennaria rosea</i>	Pink pussytoes
Arabis species & cultivars	Rockcress
<i>Arctostaphylos uva-ursi</i>	Kinnikinnick
<i>Artemisia schmidtiana</i> 'Silvermound'	Silver mound artemisia
<i>Artemisia caucasica</i>	Silver spreader
<i>Artemisia stelleriana</i>	Silver brocade
<i>Artemisia viridis</i>	Creeping artemisia
<i>Aubrieta deltoidea</i>	Rock cress
<i>Aubrieta</i> species & cultivars	False rockcress
<i>Aurinia saxatilis</i>	Basket-of-gold
<i>Bellium minus</i>	Miniature mat daisy
<i>Callitriche involucrata</i>	Poppy mallow
<i>Campanula poscharskyana</i>	Serbian bellflower
<i>Campanula carpatica</i>	Carpathian bellflower
<i>Cerastium tomentosum</i>	Snow-in-summer
<i>Ceratostigma plumbaginoides</i>	Hardy plumbago
<i>Convallaria majalis</i>	Lily-of-the-valley
<i>Duchesnea indica</i>	Mock strawberry
<i>Delosperma basuticum</i>	White eyed ice plant
<i>Delosperma cooperi</i>	Purple ice plant
<i>Delosperma cooperi</i>	Pink ice plant
<i>Delosperma hybrid</i> 'John Proffit'	John Proffit ice plant
<i>Delosperma nubigenum</i>	Yellow iceplant
<i>Dianthus</i> species & hybrids	Pinks
<i>Ephedra regeliana</i>	Creeping ephedra
<i>Fragaria</i> species & cultivars	Strawberries
<i>Fragaria indica</i> 'Pink Panda'	Mock strawberry
<i>Galium boreale</i>	Northern bedstraw
<i>Galium odoratum</i>	Sweet woodruff
<i>Lamium amatum</i>	Dead nettle
<i>Liriope muscari</i>	Liriope
<i>Liriope spicata</i>	Liriope
<i>Marrubium rotundifolium</i>	Silver edged horehound
<i>Pachysandra terminalis</i> 'Green Sheen'	Japanese spurge
<i>Penstemon caespitosus</i>	Mat penstemon
<i>Penstemon davidsonii</i>	Davidson's penstemon
<i>Penstemon davidsonii</i> v. <i>menziesii</i> 'Microphyllus'	Green mat penstemon
<i>Phlox subulata</i>	Creeping phlox
<i>Phlox stolonifera</i>	Creeping phlox
<i>Phlox</i> x <i>procumbens</i>	Creeping phlox
<i>Saponaria ocyroides</i>	Rock soapwort
<i>Saponaria officinalis</i>	Bouncing bett
<i>Saponaria</i> x <i>lempengii</i> 'Max Frei'	Giant flowered soapwort
<i>Sedum lanceolatum</i>	Yellow stonecrop
<i>Sedum rupestre</i>	Stonecrop
<i>Sedum sibiricum</i>	Creeping stonecrop
<i>Sedum sieboldii</i> 'October Daphne'	October Daphne stonecrop
<i>Sedum spathulifolium</i> & cultivars	Stonecrop
<i>Sedum spurium</i> & cultivars	Stonecrop
<i>Sempervivum tectorum</i> & cultivars	Hens & chicks
<i>Stachys byzantina</i>	Lamb's ear
<i>Thymus praecox</i>	Creeping thyme
<i>Thymus serpyllum</i> & cultivars	Mother of Thyme
<i>Veronica liwanensis</i>	Speedwell
<i>Veronica ohtensis</i>	Speedwell
<i>Veronica gentianoides</i>	Gentian speedwell
<i>Veronica pectinata</i>	Woolly speedwell
<i>Veronica seduncularis</i>	Creeching veronica

HERBACEOUS PERENNIALS	
SCIENTIFIC NAME	COMMON NAME
<i>Achillea</i> species	Yarrow
<i>Agastache</i> species	Hyssop
<i>Aicra rosea</i>	Hollyhock
<i>Alchemilla</i> species	Lady's mantle
<i>Allium</i> species	Chives/Onion
<i>Anemone blanda</i> species	Windflower
<i>Aquilegia</i> species	Columbine
<i>Arreria maritima</i>	Sea thrift
<i>Ardopias</i> species	Milkwed
<i>Aster</i> species	Aster
<i>Aurinia saxatilis</i>	Basket-of-gold
<i>Baptisia</i> species	False indigo
<i>Bergenia cordifolia</i> & cultivars	Pig squeak
<i>Campanula</i> species & cultivars	Bellflower
<i>Centranthus ruber</i>	Jupiter's beard
<i>Chamerion angustifolium</i>	Fireweed
<i>Coreopsis</i> species	Coreopsis or tickseed
<i>Delphinium</i> species & cultivars	Delphinium
<i>Dianthus</i> species & cultivars	Pinks
<i>Echinacea purpurea</i>	Coneflower
<i>Erigeron</i> species	Flaxbane
<i>Gaillardia</i> species & cultivars	Blanket flower
<i>Geranium</i> species	Cranesbill hardy geranium
<i>Gnem triflorum</i>	Prairie smoke
<i>Helianthemum nummularium</i>	Sun rose
<i>Hemerocallis</i> cultivars	Daylily
<i>Heuchera</i> species & cultivars	Coral bells
<i>Hosta</i> species & cultivars	Plantain lily
<i>Iris</i> species & cultivars	Iris, tall bearded
<i>Kniphofia</i> species & hybrids	Red-hot poker
<i>Lavandula</i> species	Lavender
<i>Leucanthemum</i> x <i>superbum</i>	Shasta daisy
<i>Lilium</i> species & hybrids	Lilies
<i>Linum perenne</i>	Blue flax
<i>Lupinus</i> species & cultivars	Lupine
<i>Monarda</i> species & hybrids	Bee balm
<i>Oenothera</i> species & hybrids	Evening primrose
<i>Papaver orientale</i>	Oriental poppy
<i>Penstemon</i> species & hybrids	Beardtongue
<i>Phlox paniculata</i>	Summer phlox
<i>Polemonium</i> species	Jacob's ladder
<i>Ratibida columnifera</i>	Prairie conflower
<i>Rudbeckia fulgida</i>	Black-eyed Susan
<i>Salvia</i> species & hybrids	Sage
<i>Veronica prostrata, longifolia, spicata</i>	Speedwell
<i>Yucca filamentosa</i>	Adam's needle
<i>Zauschneria ganetii</i> 'Orange Carpet'	Creeping hummingbird carpet

VINES	
SCIENTIFIC NAME	COMMON NAME
<i>Actinidia kolomikta</i> 'Arctic beauty'	Kiwi vine
<i>Akalia quinata</i>	Chocolate vine
<i>Bignonia capreolata</i> 'Tangerine beauty'	Crossvine
<i>Campsis radicans</i>	Trumpet vine
<i>Campsis</i> x <i>tagliabuana</i> 'Madame Galen'	Trumpet creeper
<i>Clematis</i> species & cultivars	Clematis
<i>Humulus lupulus</i>	Hops
<i>Hydrangea anomala</i> subspecies <i>petiolaris</i>	Climbing hydrangea
<i>Lonicera sempervirens</i> 'Magnifica'	Trumpet honeysuckle
<i>Lonicera hedroottii</i> 'Goldflame'	Honeysuckle



## Goals

- Curate a simple site that explains fire-wise concepts
- Provides curious homeowners design inspiration based on their land type:
  - Flatland
  - Hillside
  - Waterside
- Focus on clear usability to streamline information



[www.palousefirewisefuture.com](http://www.palousefirewisefuture.com)







# WELCOME

This site is designed as a central hub for fire-wise information & design inspiration curated for Malden & Pine City landowners.

Click here for:



FIRE-WISE INFO.

Click here for:



DESIGN INSPO.

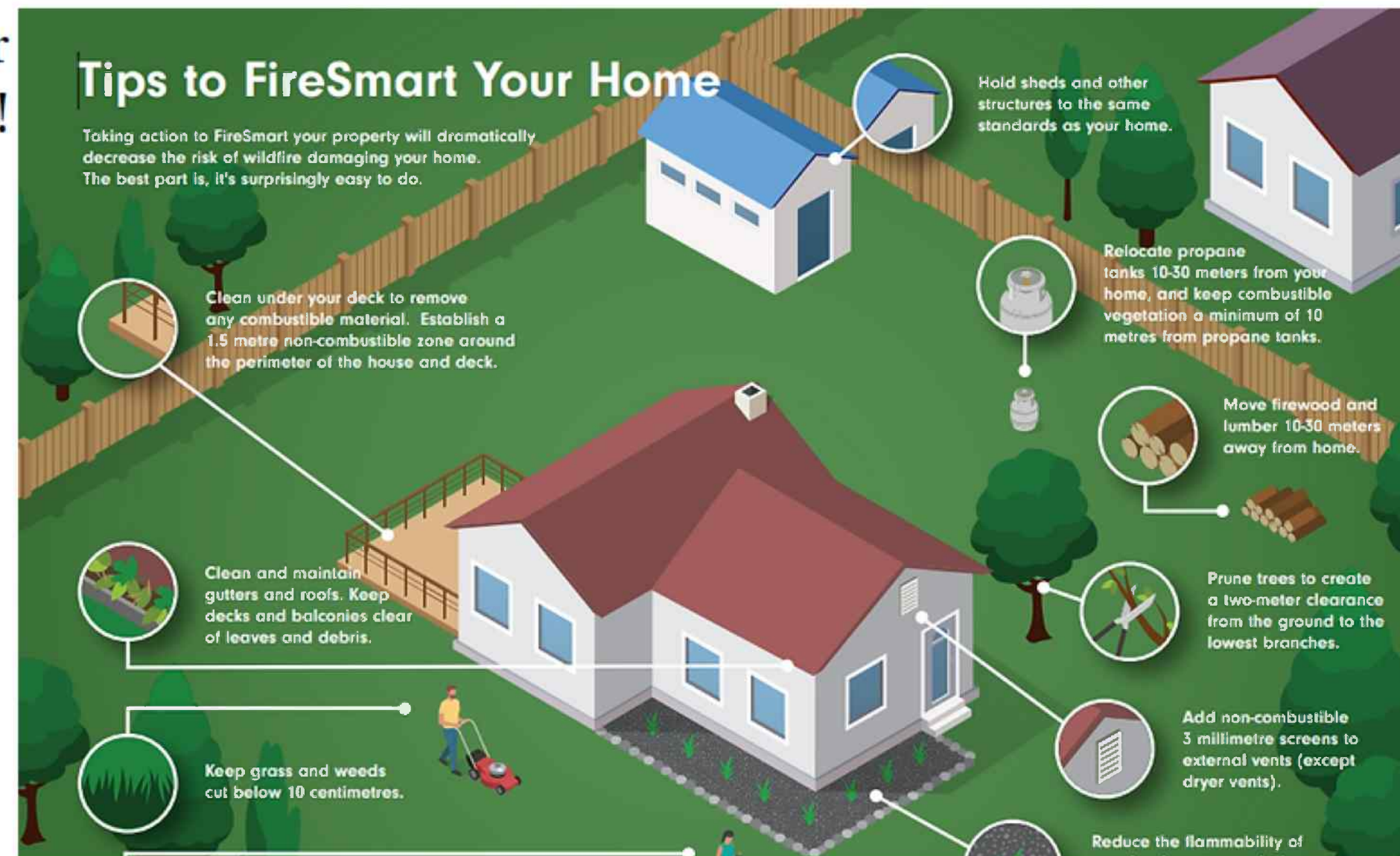


# What Does Fire-Wise Mean?

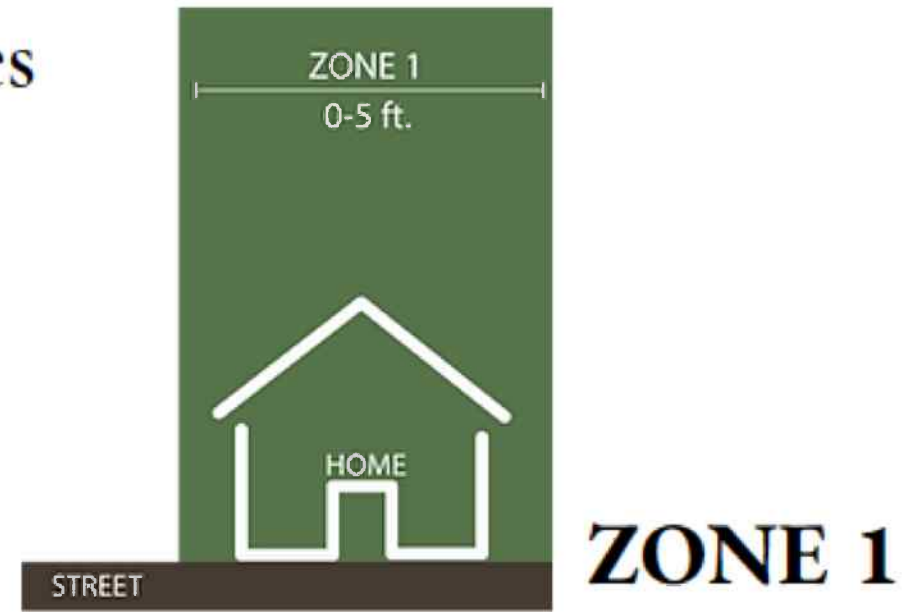
Also known as firescaping, fire-wise is a type of landscaping with two primary goals:

1. Mitigate a fire that's close to structures
2. Slow the fire's damage on surrounding spaces

Click on the image for more info!



## Home Ignition Zones



- 5 feet out from the home or structure
- Nothing flammable should be planted or placed against the structure
  - This includes trees, brush, tall grass, leaves, firewood piles, bark mulch, and other flammable materials
- Prune trees with branches and foliage that hang within Zone 1 to eliminate possible fire transfer up existing trees.

## What is a Tree Crown?

Parts of a tree



- 5 to 10 feet from the house or structure



## What makes a plant fire-wise?

- High moisture content
- Broad and thick leaves
  - Thin leaves or needles tend to dry out quickly and ignite easily
- Open and loose branching patterns

Click here to read an article explaining more in depth

[More Info.](#)

## Plants that are NOT fire-wise

### Trees:

- Arborvitae
- Junipers
- Firs
- Larch
- Spruce
- Douglas-Fir
- Yew
- Hemlock
- Cedar

### Shrubs:

- Bitterbrush
- Sagebrush
- Mugo pine
- Arborvitae
- Juniper
- Yew

### Grasses

- Pampas grass
- Cheat grass
- 'Karl Foerster'



## Videos to learn more



Basic overview of firescaping goals  
*5 minutes*



Prescribed burning information from a homeowner's perspective  
*8 minutes*



Washington wildfires and how climate change takes part in it



Pruning demonstration for wildfire prevention  
*14 minutes*



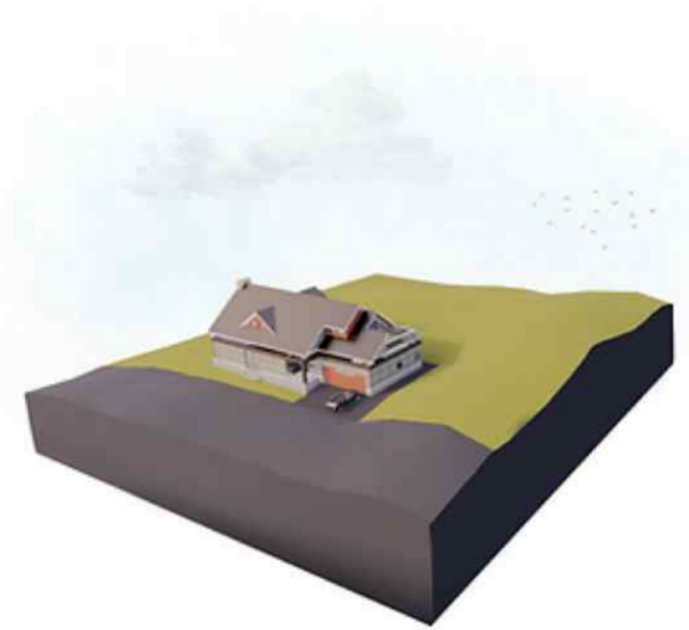
# Choose your land type

Click on each image to find design inspiration curated to your landscape



**Flatland**

Landscape with minimal changes in elevation.



**Hillside**

Landscape with steep elevation changes.



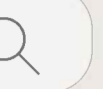
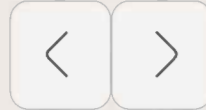
**Waterside**

Landscape near the Pine Creek

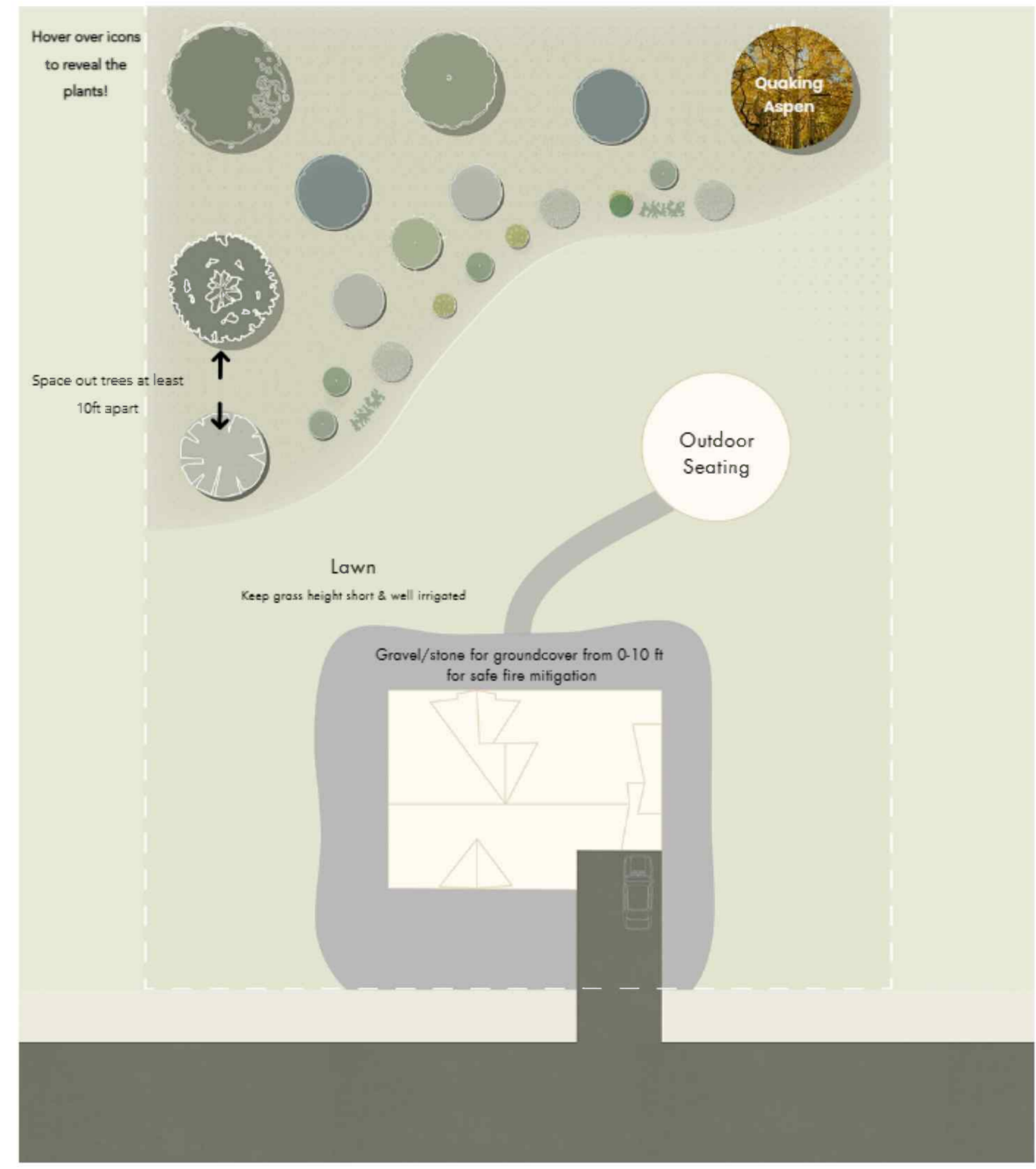




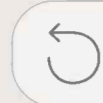




# Plan View







# Plant List

Click on each plant image to find care and maintenance tips

## Trees



*Gleditsia tricanthos inermis*  
THORNLESS  
HONEY LOCUST



*Pinus ponderosa*  
PONDEROSA PINE



*Acer rubrum*  
RED MAPLE



*Populus tremuloides*  
QUAKING ASPEN

## Shrubs



*Philadelphus virginialis*  
MOCK ORANGE



*Syringa vulgaris*  
COMMON LILAC



*Rhododendron sp.*  
AZALEA



*Viburnum sp.*  
VIBURNUM




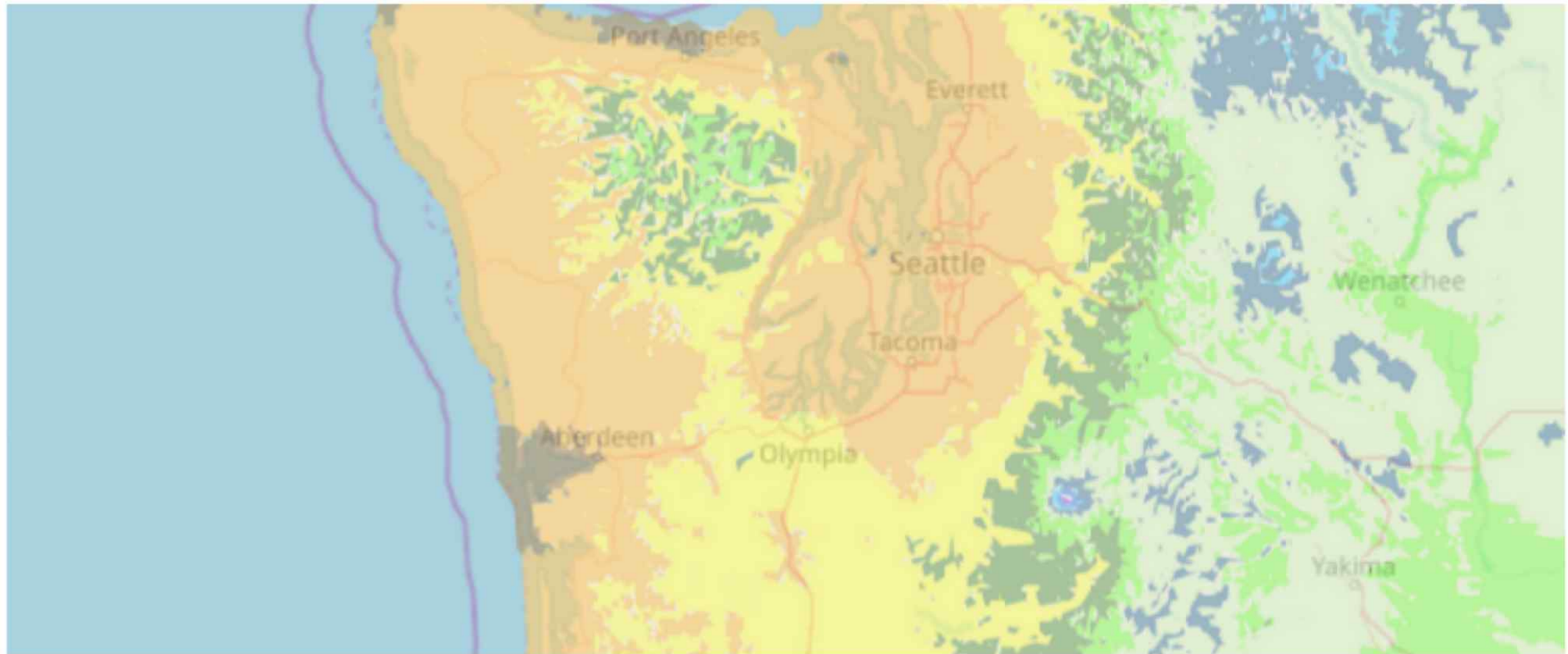


# Right Plant Right Place

You are in Hardiness Zone 6b

- Hardiness zones designate the minimum temperature a plant can tolerate
- 6b=Winter average temperature of -5° to 0°F
- Ensure the plants chosen are survivable in this zone

 [Click here to find the nearest plant shops!](#)



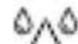
## Trees



### Ponderosa pine

*Pinus ponderosa*

Evergreen native to Western North America

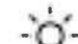
 Water

Notorious for their root ball drying out soon after being planted if not given enough water.

After two years of supplemental watering, this tree has great drought tolerance.

 Size

60 to 125 ft. tall  
25 to 30 ft. wide

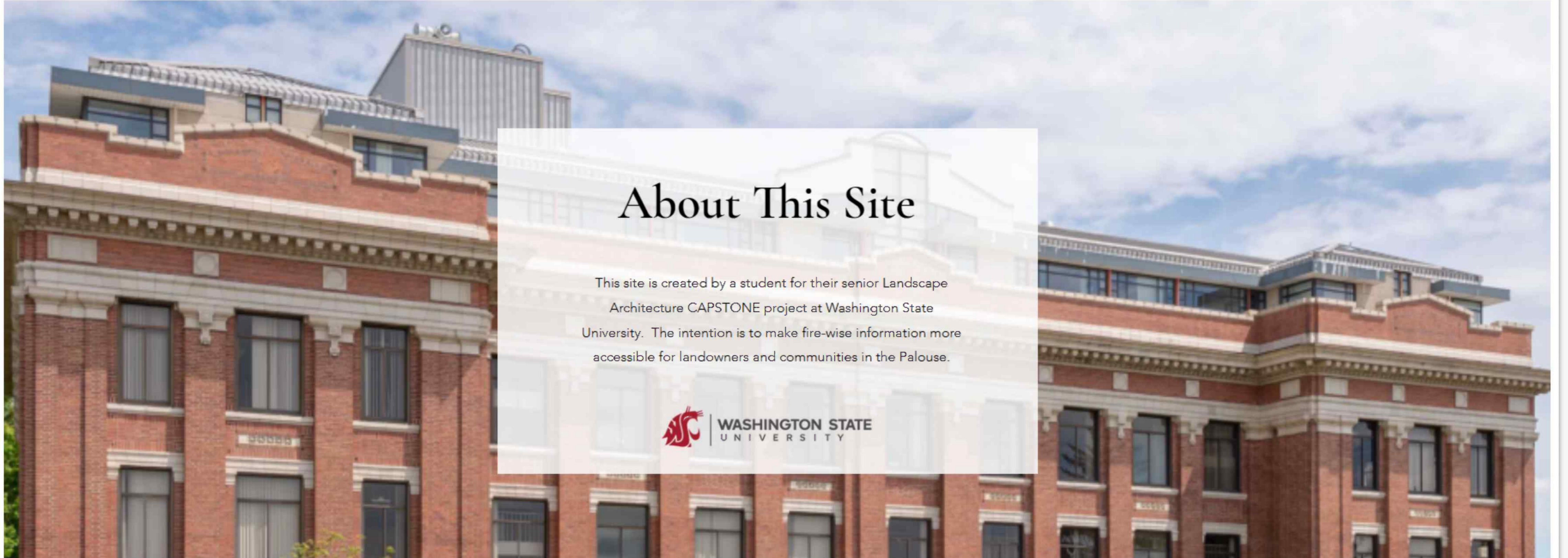
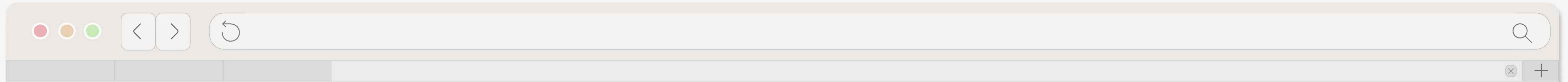
 Sun

Full sun to partial shade

 Pruning

Prune in late fall/winter. Remove dead, diseased, or damaged branches.





## About This Site

This site is created by a student for their senior Landscape Architecture CAPSTONE project at Washington State University. The intention is to make fire-wise information more accessible for landowners and communities in the Palouse.

