

Climate Resilient Community

Nestor Herrera

Why?

Climate Change

Hot Summers

Unforeseeable Weather

Colder Winter

Research



- Improve Protection
- Enhance Habitat

- Could use Shade
- Connectivity
- Vegetation

- Maintenance
- Reduce Fire hazards

Project Goal



Fire Protection



Natural-based
Solution

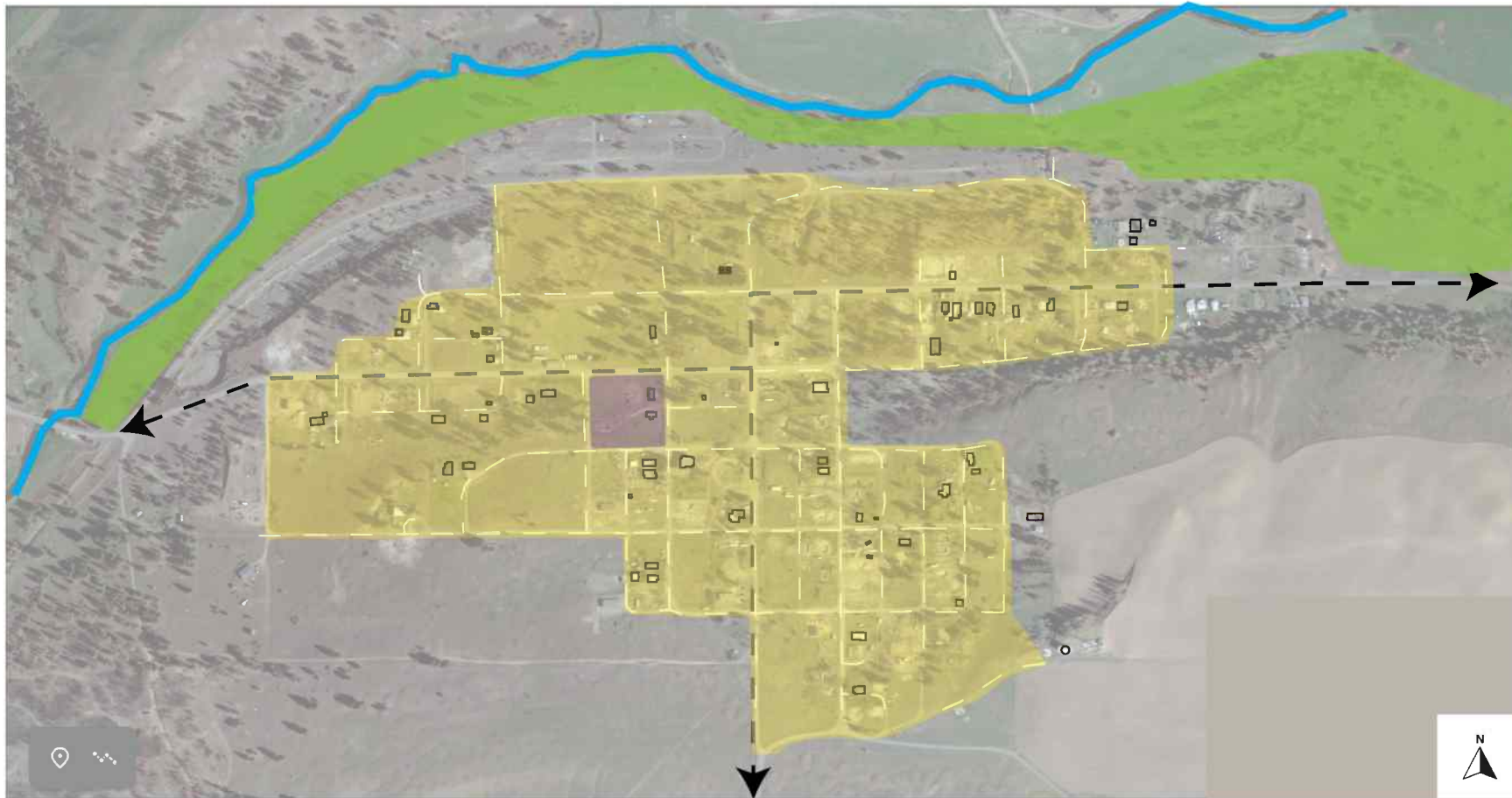


Enhance
Attractiveness



Promote Healthier
lifestyle/Recreation

Concept



- Ponderosa Pine will provide protection around town
 - Be a buffer against winter winds and heat waves
 - Provide Habitat
 - Have other trees around stream
- Swale
 - Create walkway
 - More connectivity
 - Promote recreation
 - Firewise vegetation
- Zoning will provide better protection on residential
 - Provide an attractive yet Firewise landscape.
 - Adaptive plants in the area

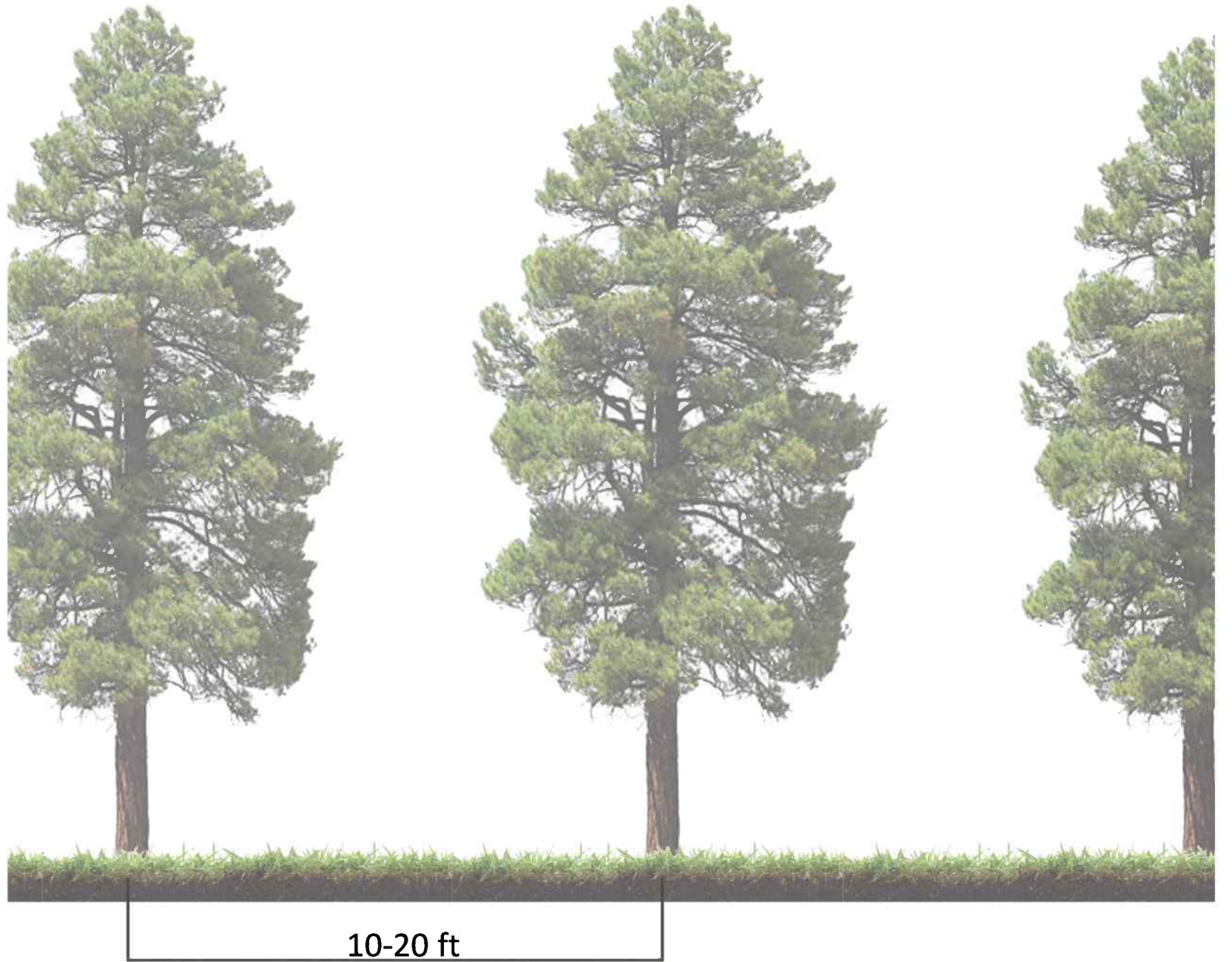
Ponderosa Pine



- Best choice for fire adaptation
- Defensible Wood
- 250 tree/acre
- Slow wind speed
- Maintenance is important!

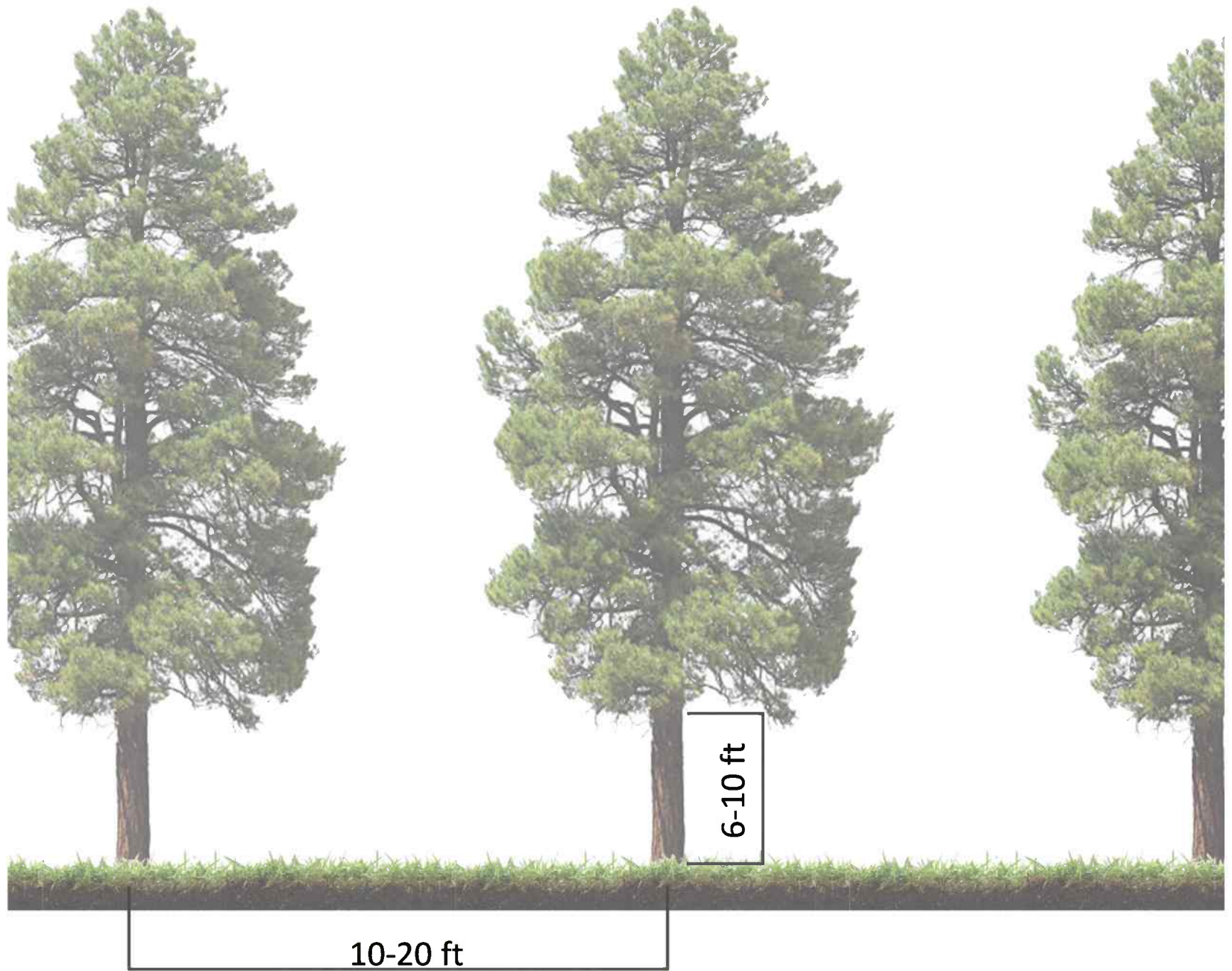
Ponderosa Pine

- Approx. 10 to 20 ft of Space



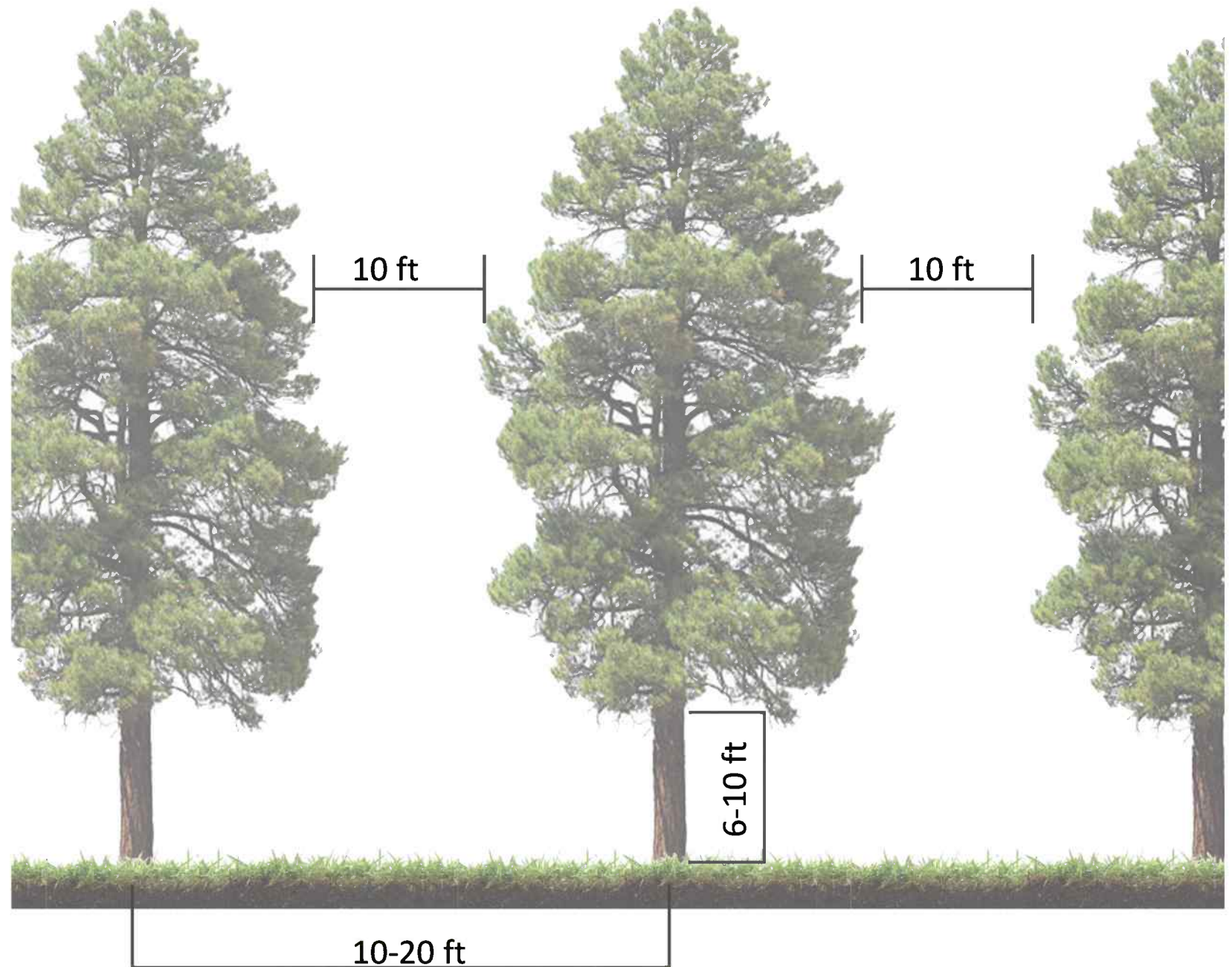
Ponderosa Pine

- Approx. 10 to 20 ft of Space
- Lower chance of fire climbing up



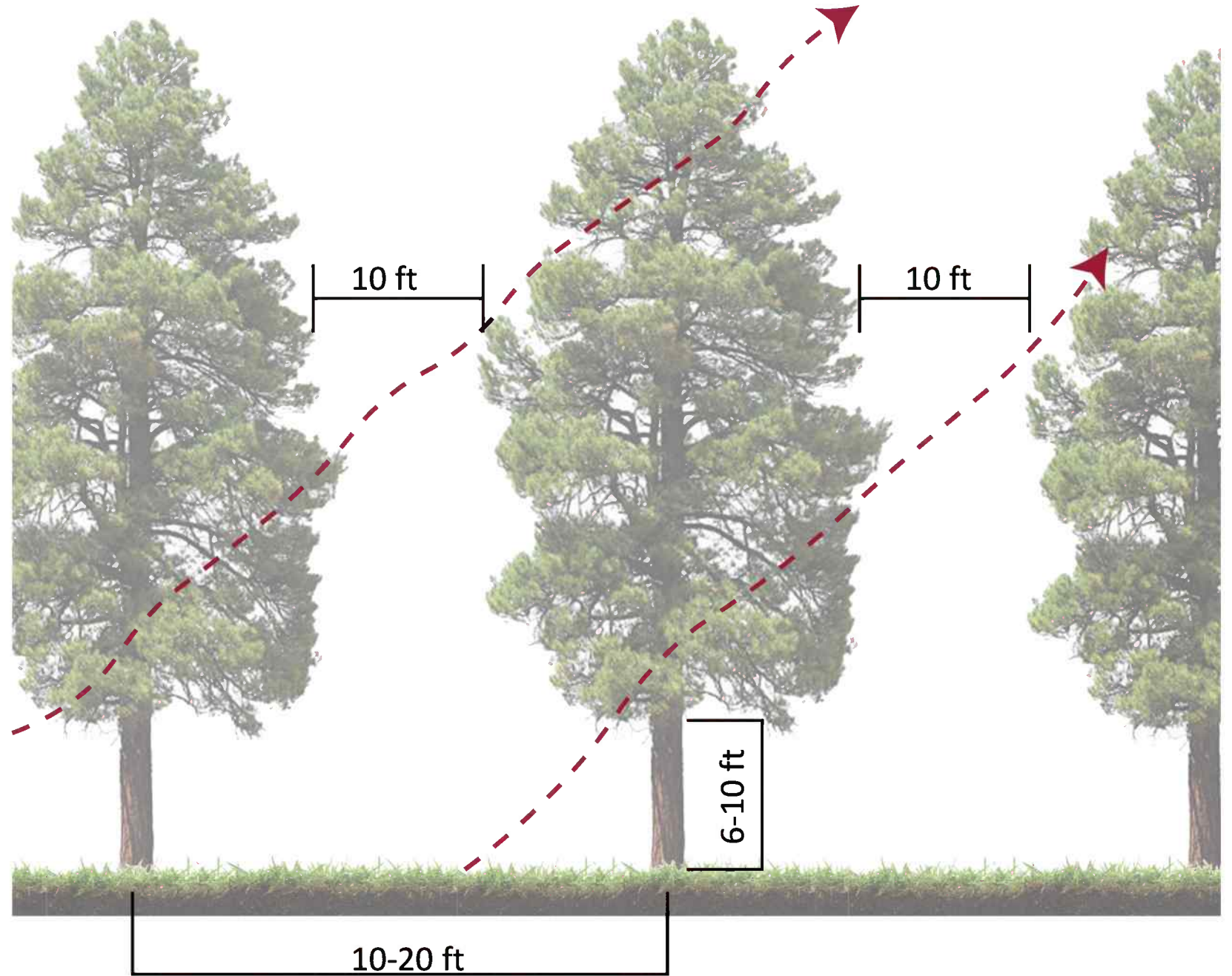
Ponderosa Pine

- Approx. 10 to 20 ft of Space
- Lower chance of fire climbing up
- Branches at least 10 ft apart



Ponderosa Pine

- Approx. 10 to 20 ft of Space
- Lower chance of fire climbing up
- Branches at least 10 ft apart
- Heat can pass through

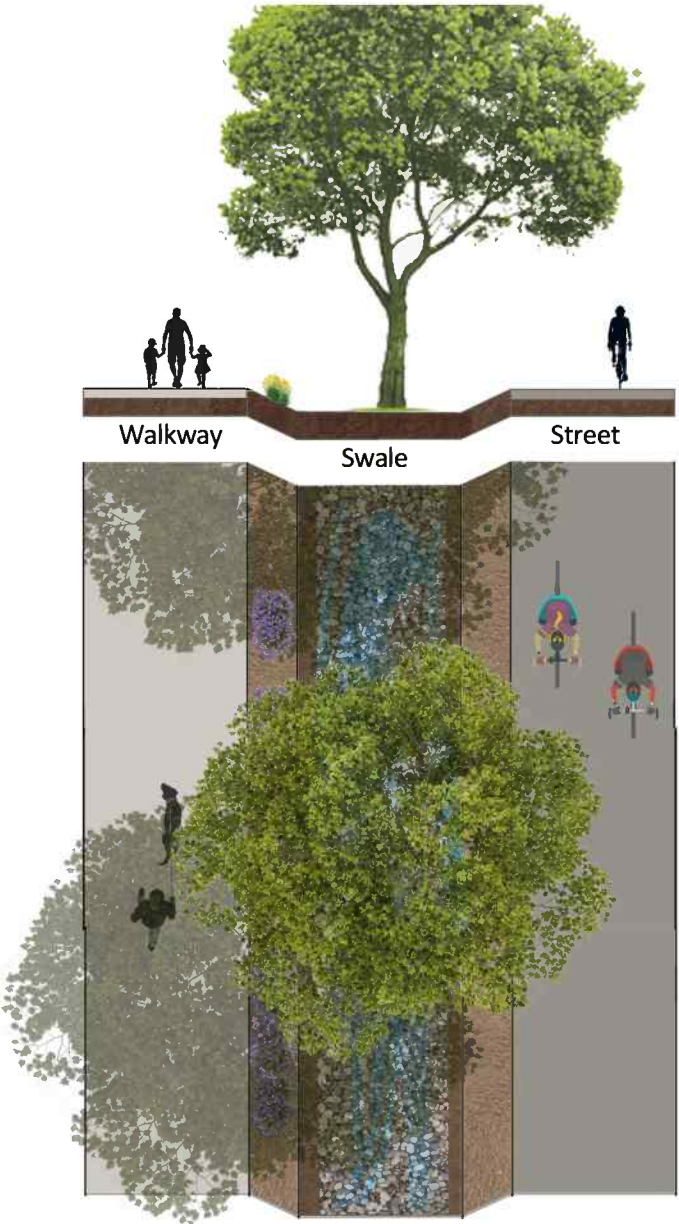


Town Vision

- Trees 35 ft + from houses
- Approx. 25 ft away
- Maintenance regularly
- Connectivity
- Native plants



Town of Malden - Swale/Sidewalk

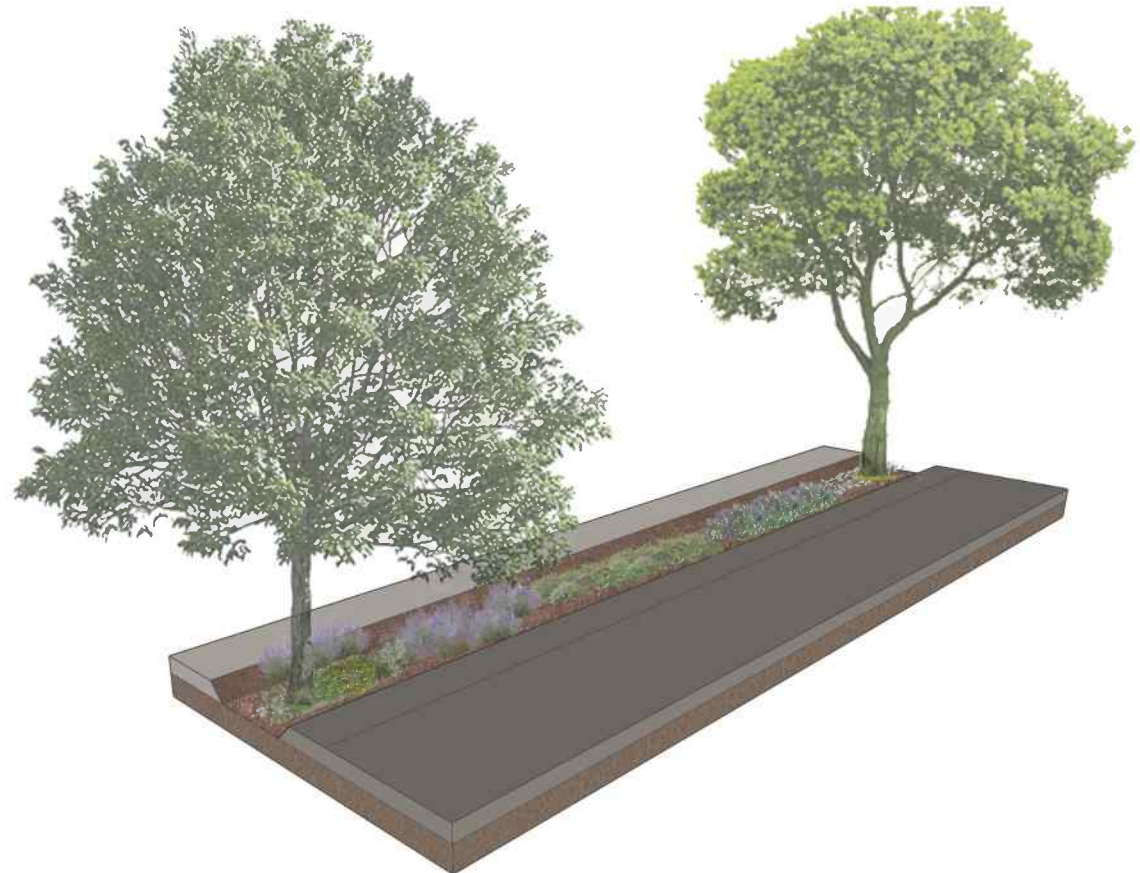


Town of Malden

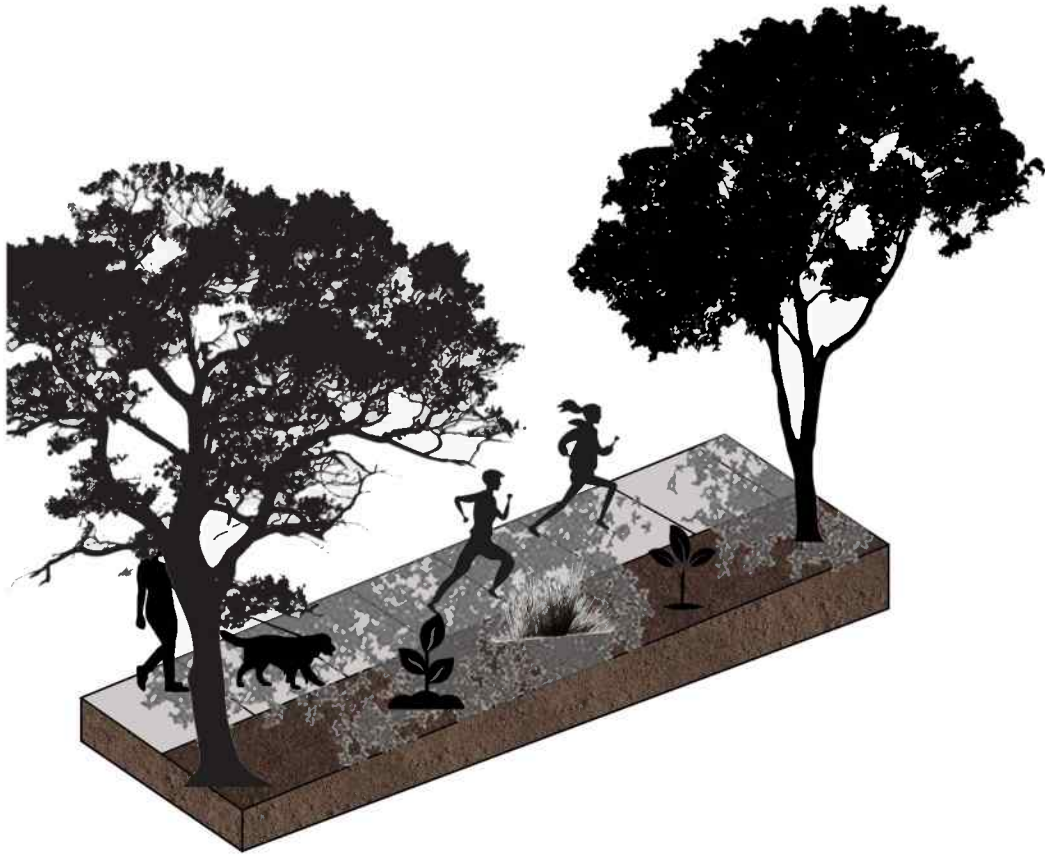


- Water will be drained
- The rocks helps slow down the speed of the water
- The gravel walkway is quite porous

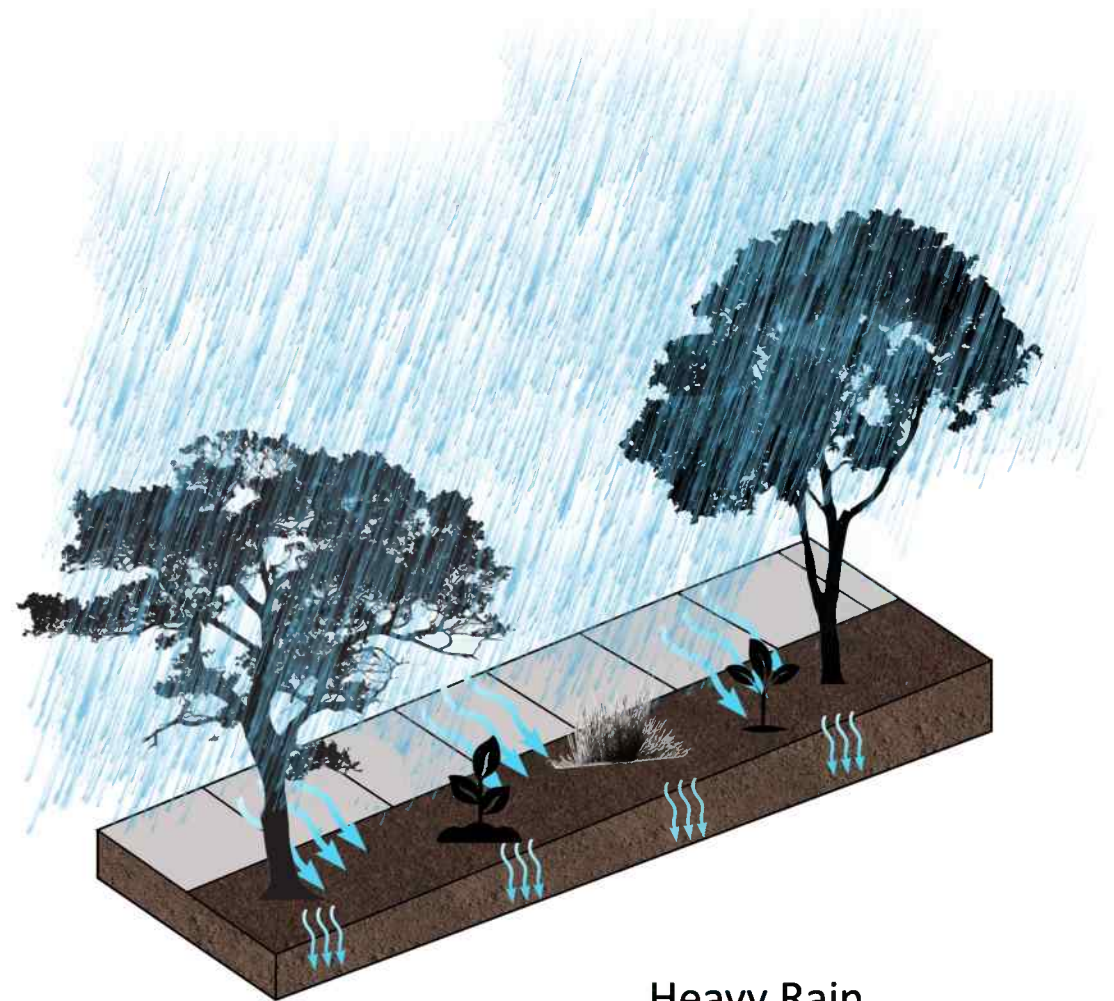
- Vegetation will help absorb the water
- Will enhance attraction
- Trees will provide shade



Diagrams



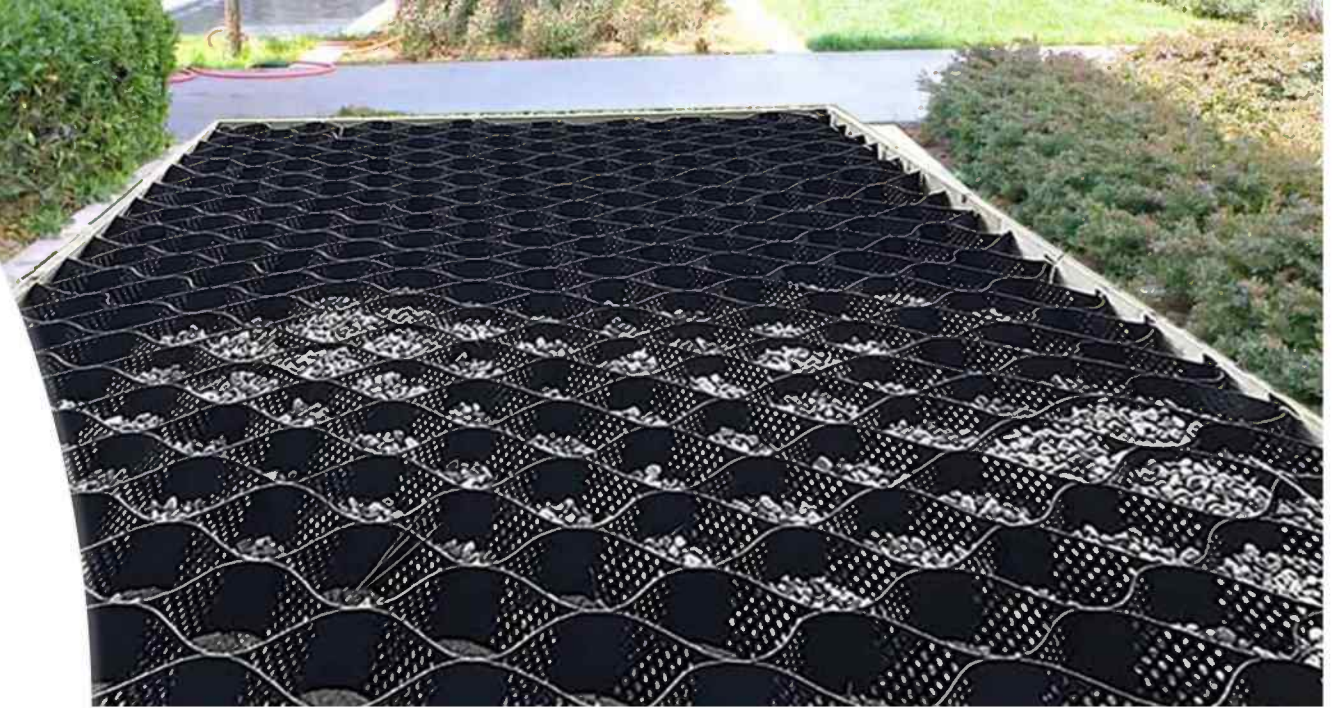
Sunny Weather



Heavy Rain

Gravel Walkway

- $\frac{1}{4}$ - $\frac{1}{2}$ inch gravel rocks
- Wheelchair Accessible
- Porous
- Eco-Friendly

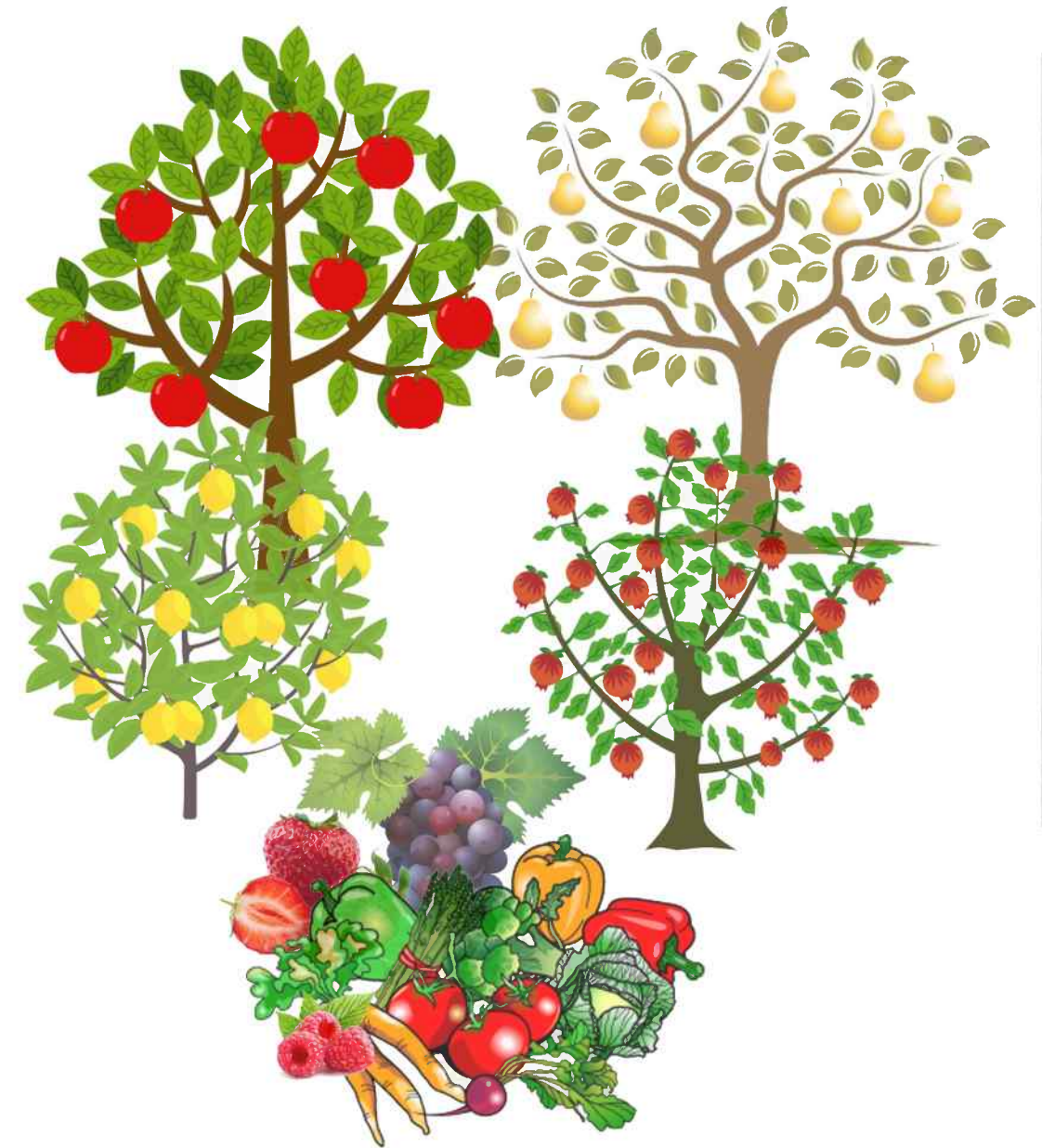


A sunflower is shown in a white, textured pot. The background is a soft-focus field of sunflowers under bright, natural light. The sunflower in the pot is in full bloom, with bright yellow petals and a dark brown center. A green leaf is visible to the right of the flower. In the lower-left foreground, another sunflower is in the process of blooming, showing its green bracts.

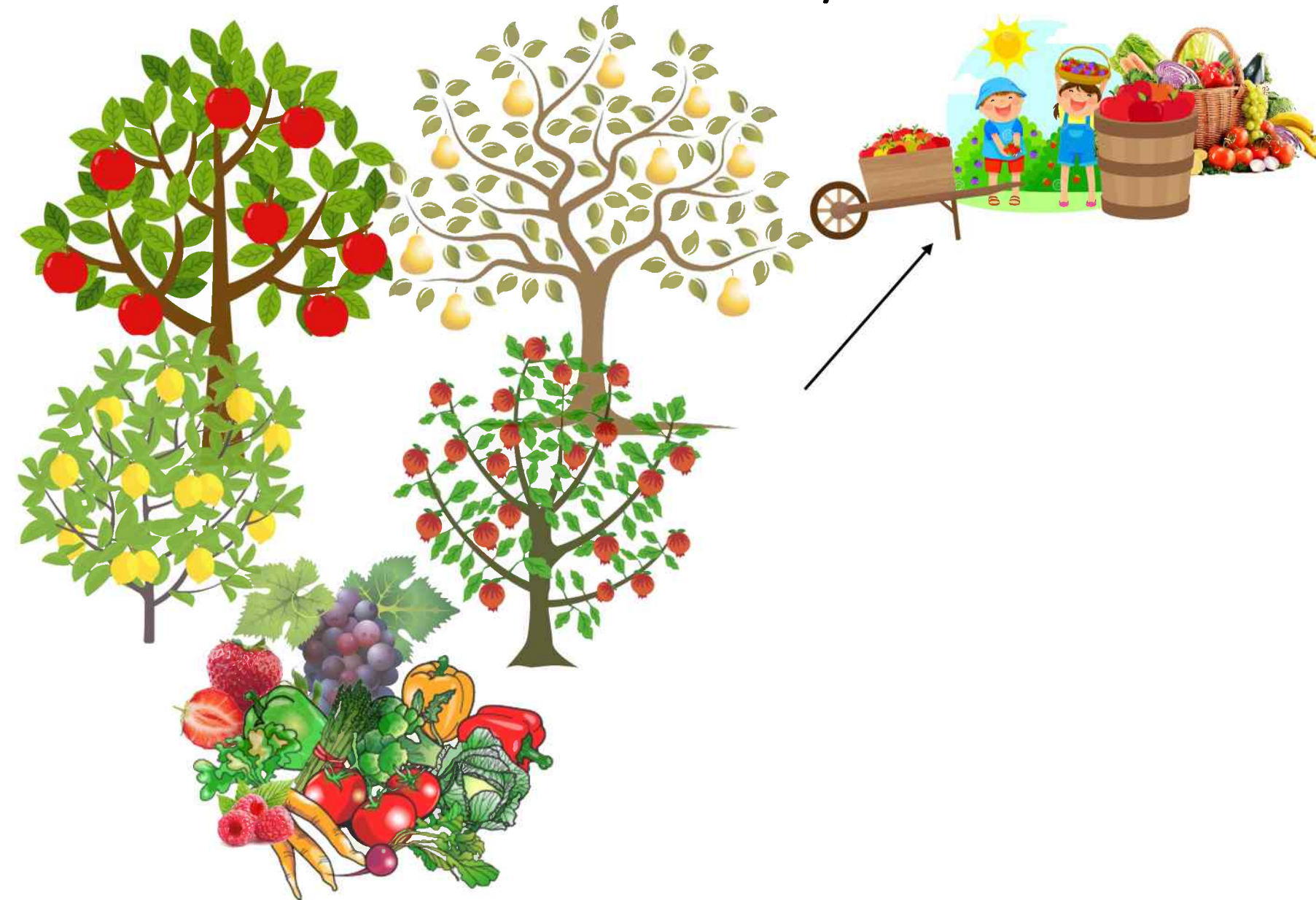
Planting

- Native Plants
- Drought tolerate
- Firewise
- Pollinator
- Beneficial

Local Food – Fruit Trees/Gardens

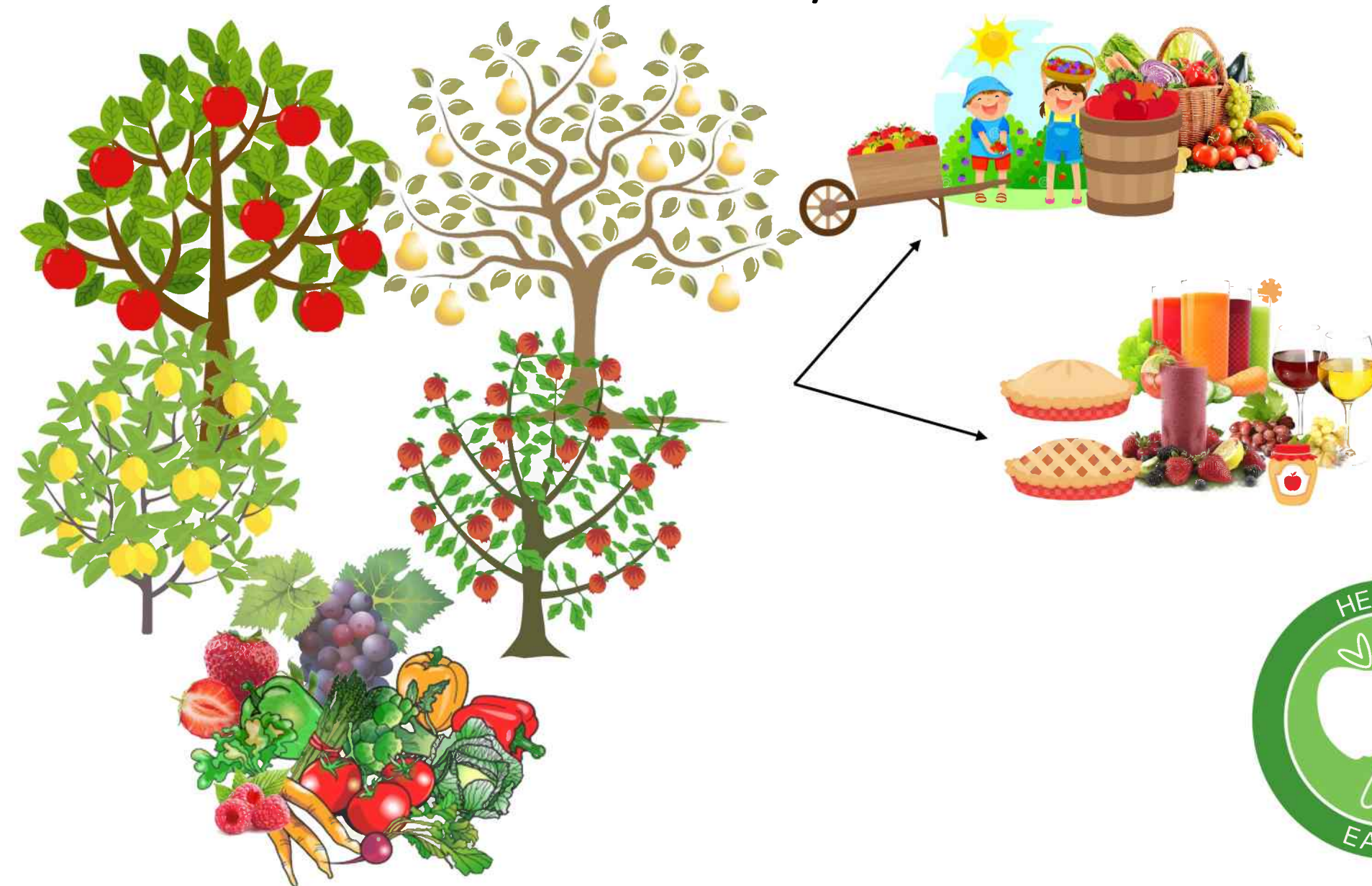


Local Food – Fruit Trees/Gardens



- Fruit Picking
- Community bonding
- Learning experience

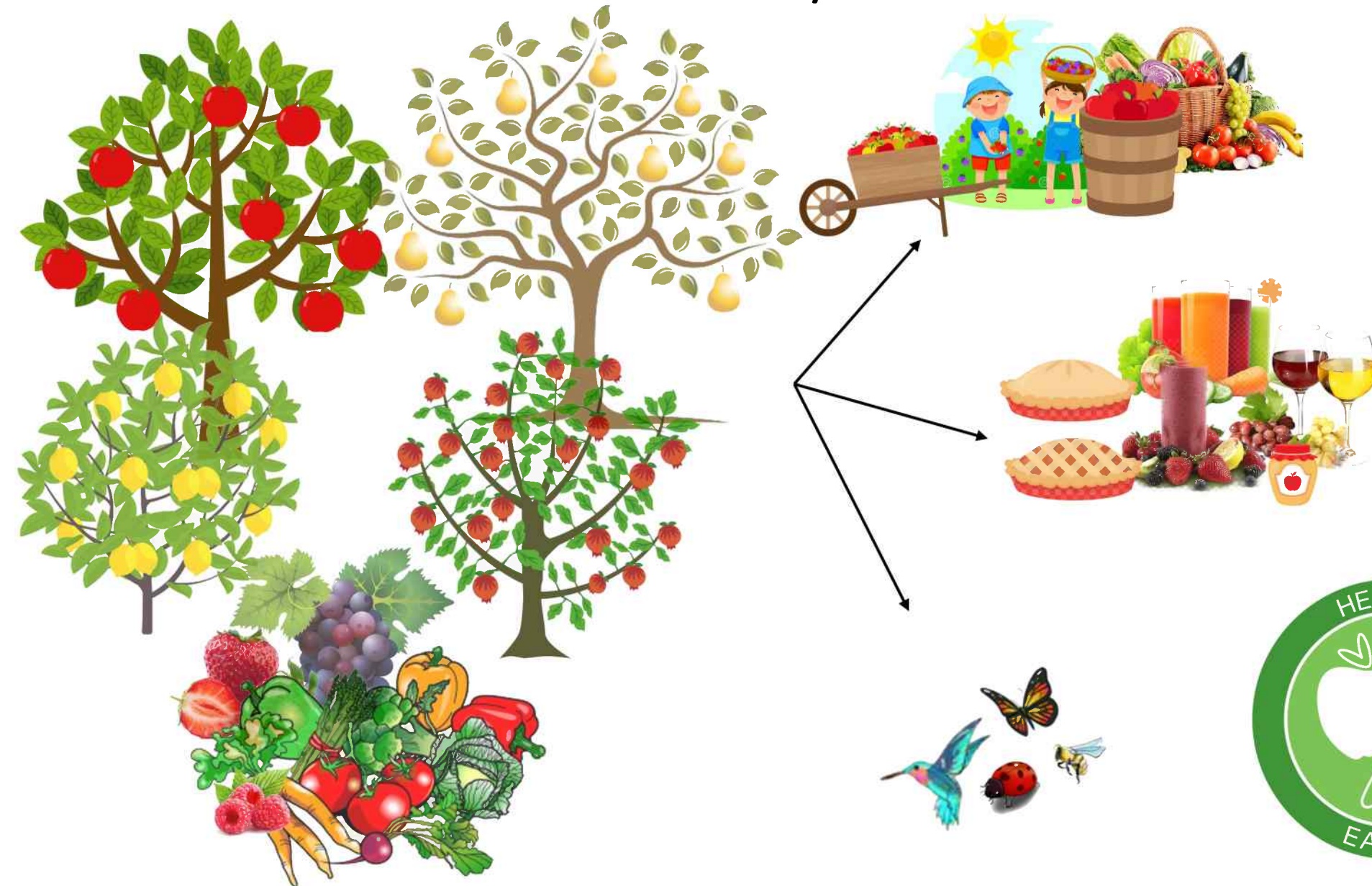
Local Food – Fruit Trees/Gardens



- Fruit Picking
- Community bonding
- Learning experience
- Economy
- Bake sale
- Beverages
- Wine
- Restaurants



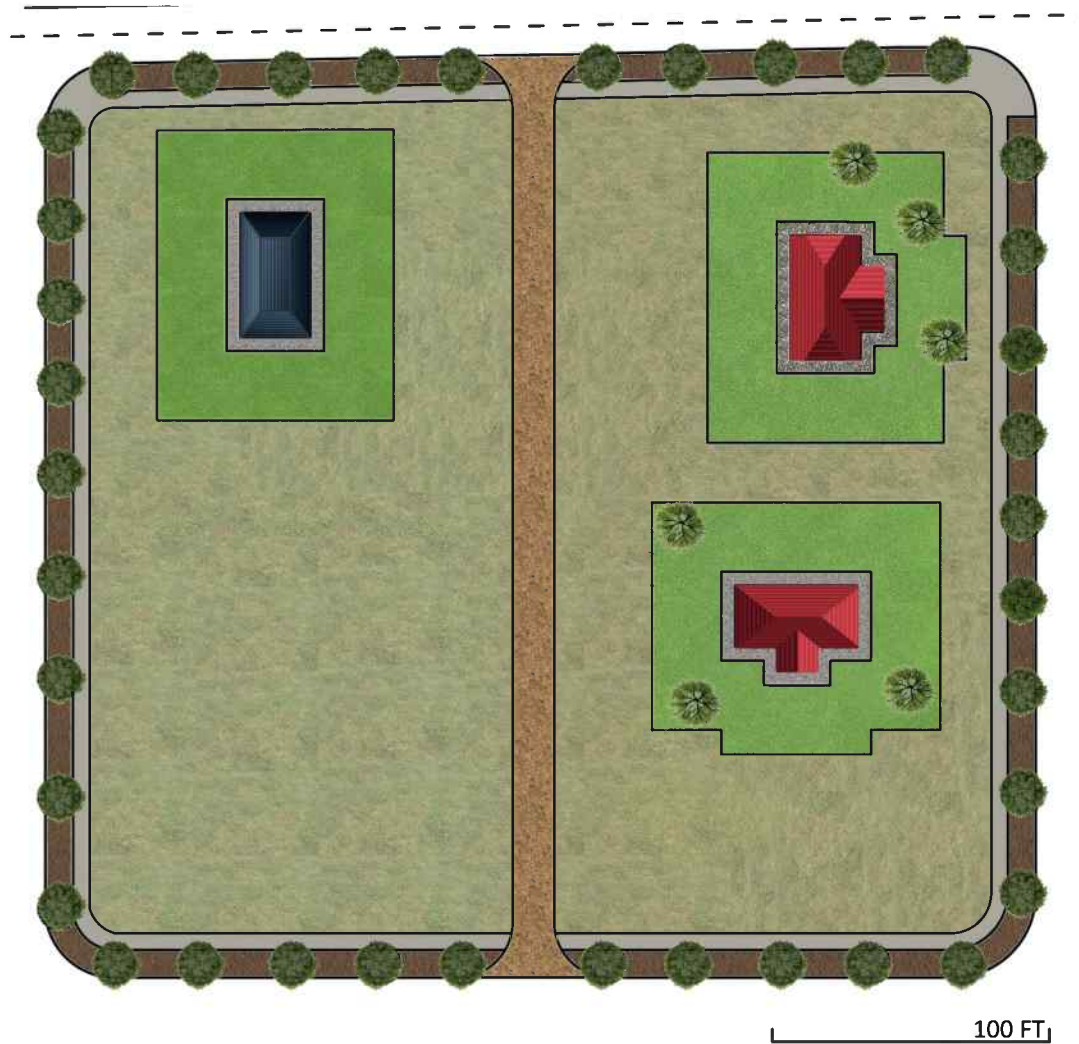
Local Food – Fruit Trees/Gardens



- Fruit Picking
- Community bonding
- Learning experience
- Economy
- Bake sale
- Beverages
- Wine
- Restaurants
- Pollinator

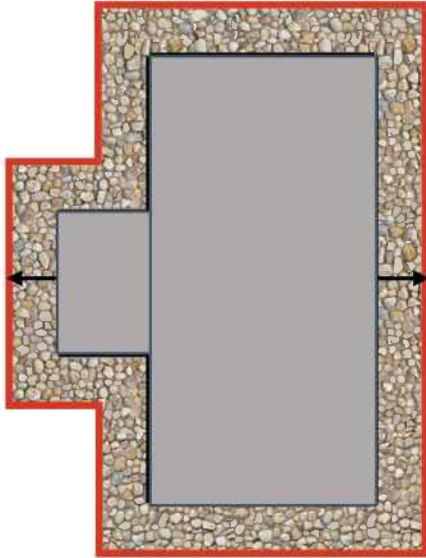


Residential: Fire-Wise Zoning



- Firewise Spacing
- Fire Resilient Plants
- Shade
- Maintenance

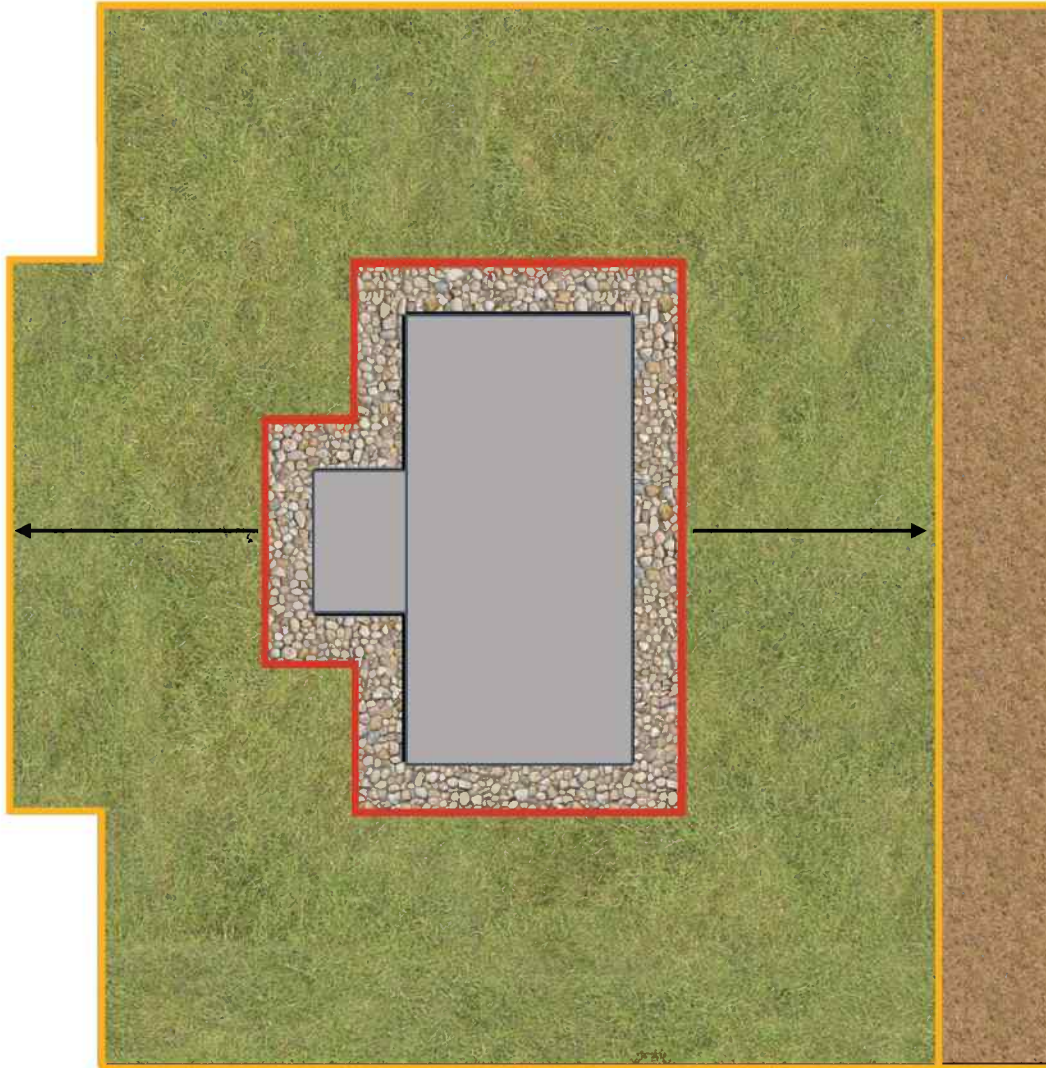
Residential: Fire-Wise Zoning



Zone 1

- 0 – 10 ft From House
- Hardscape
- Small Fire-Resistant Plant (Well Moist)
- No Trees or Shrubs

Residential: Fire-Wise Zoning



Zone 1

- 0 – 10 ft From House
- Hardscape
- Small Fire-Resistant Plant (Well Moist)
- No Trees or Shrubs

Zone 2

- 10 – 30 ft
- Trees Pruned At least 10 ft From the Ground
- Tree Branches At Least 10 ft From House Roof
- Single Shrubs
- Spread Out
- Well Maintained
- Eliminate Ground/Ladder Fuel

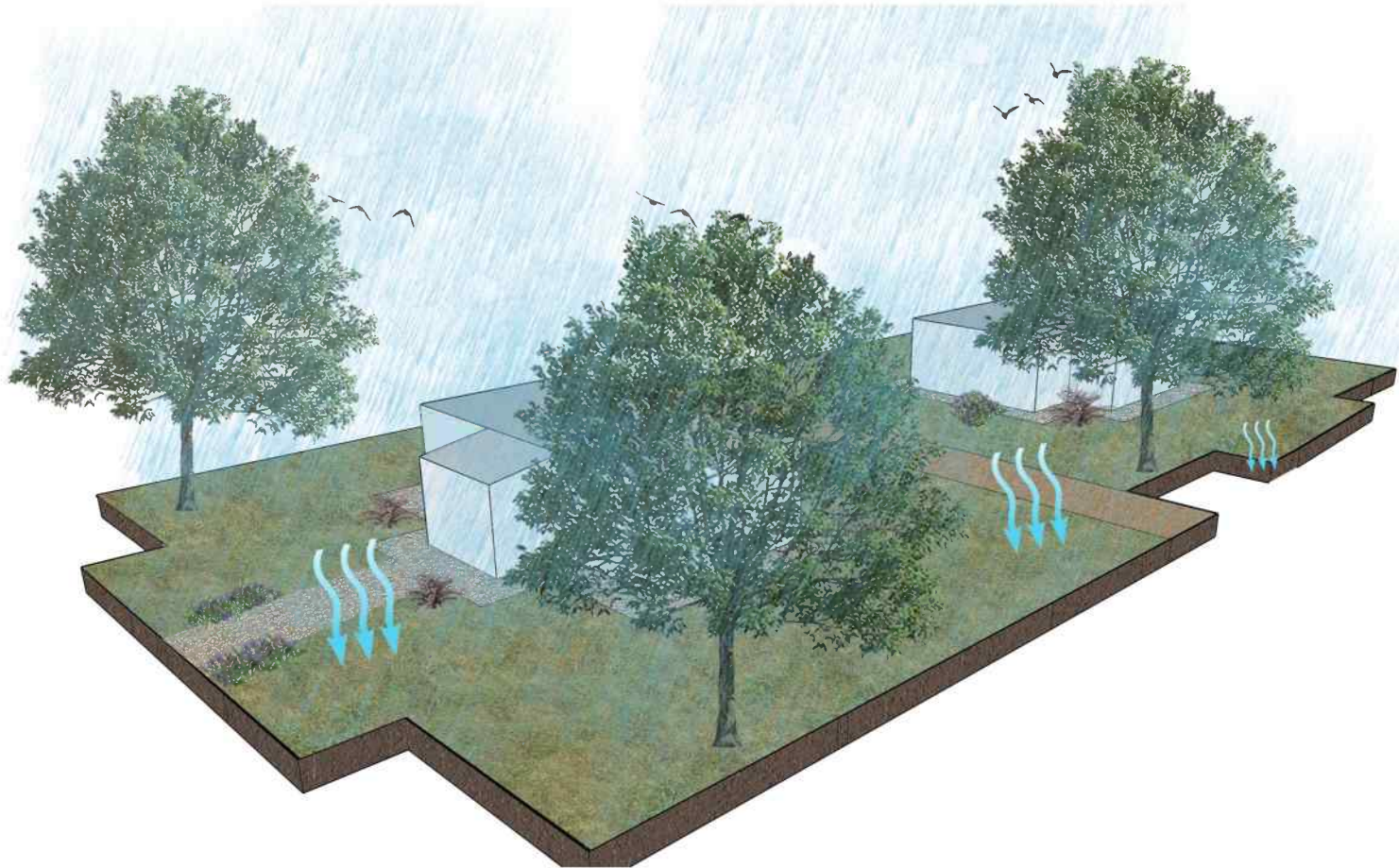
Residential – Hot Climate



Hot Climate

- Trees around lots will provide shade
- Avoid having dry vegetation

Residential – Rain Climate



Rain Climate

- Plants in the area will help absorb the water
- Hardscape

Thanks