



— LANGUAGE OF LANDSCAPE

AN EXPLORATION INTO THE RELATIONSHIP OF LAND AND TEXT
BY ERICA ONEAL

A BRIEF HISTORY OF MALDEN



1909- Settlement Begins



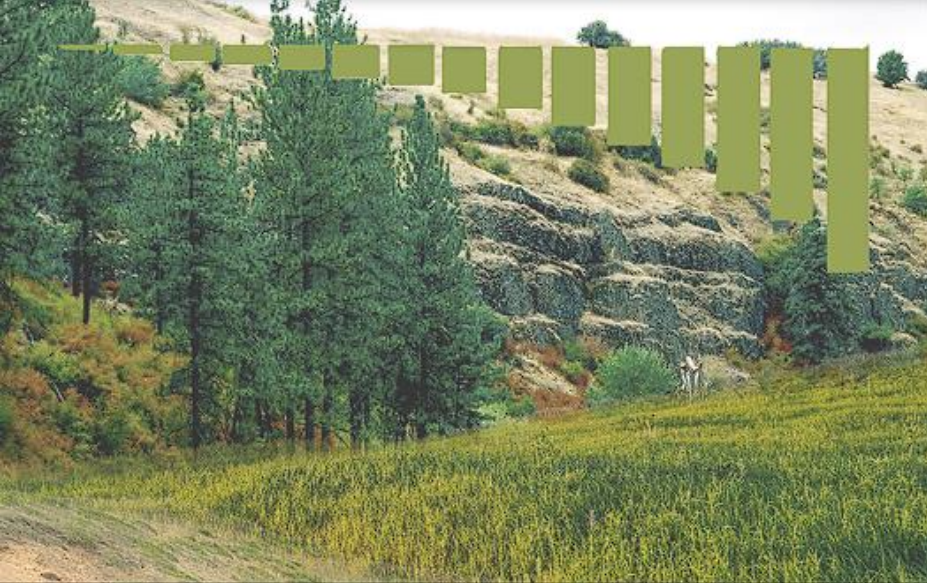
1911- Railway Boom



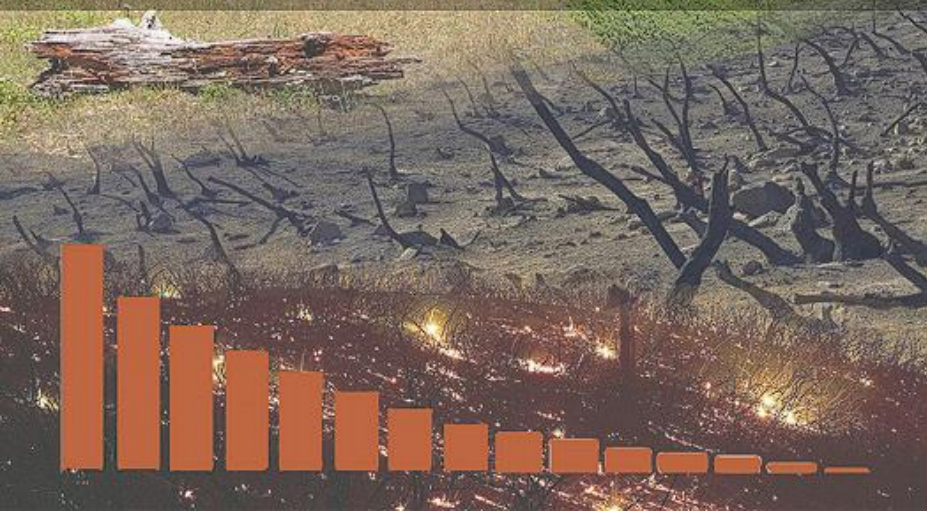
1920- Railway Bust, Town Declines Steadily For Next 100 Years



2020- Fire Destroys over 85% of Town



**SHOULD WE FIGHT
TO SAVE ITS LIFE
OR LET IT SUCCUMB
TO ITS WOUNDS**



WORDS AS DESCRIPTIONS

- An acronym for MALDEN:

M- modest

A- alienated

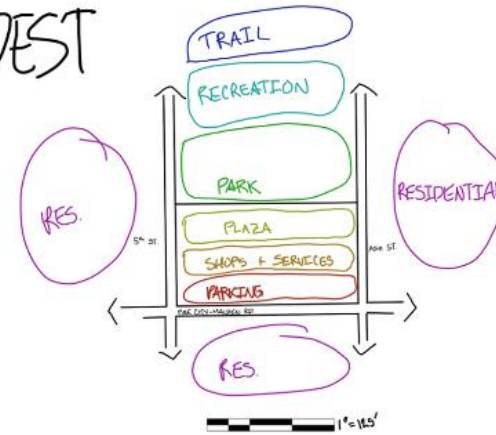
L- lackluster

D- dignified

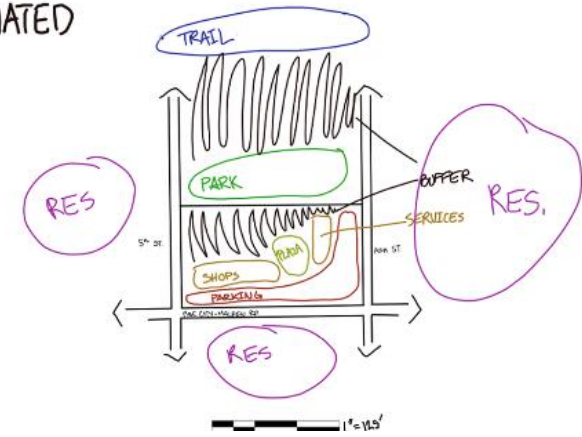
E- emboldened

N- nostalgic

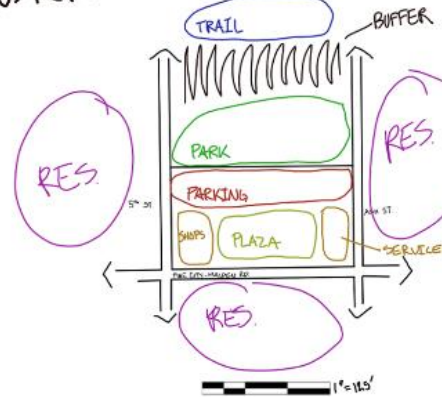
MODEST



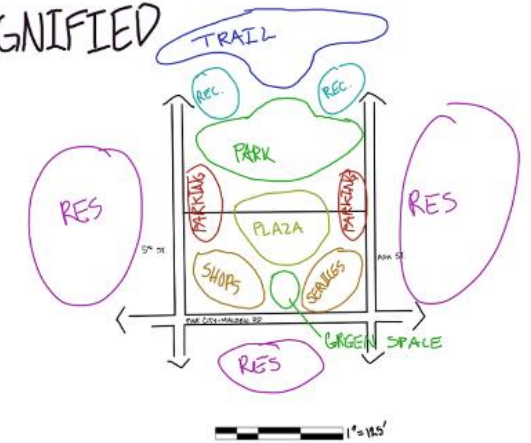
ALIENATED



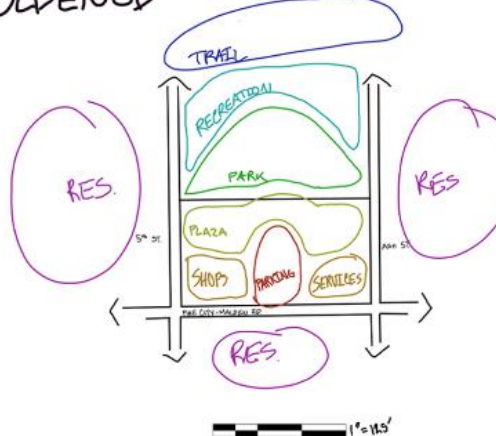
LACKLUSTER



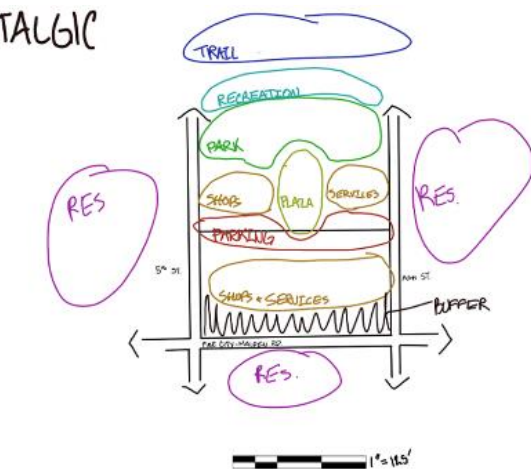
DIGNIFIED



EMBOLDENED



NOSTALGIC



WORDS AS EXPERIENCES

- How do you EXPERIENCE modesty, alienation, lackluster, dignity, emboldened, and nostalgia?



SITE LOCATION

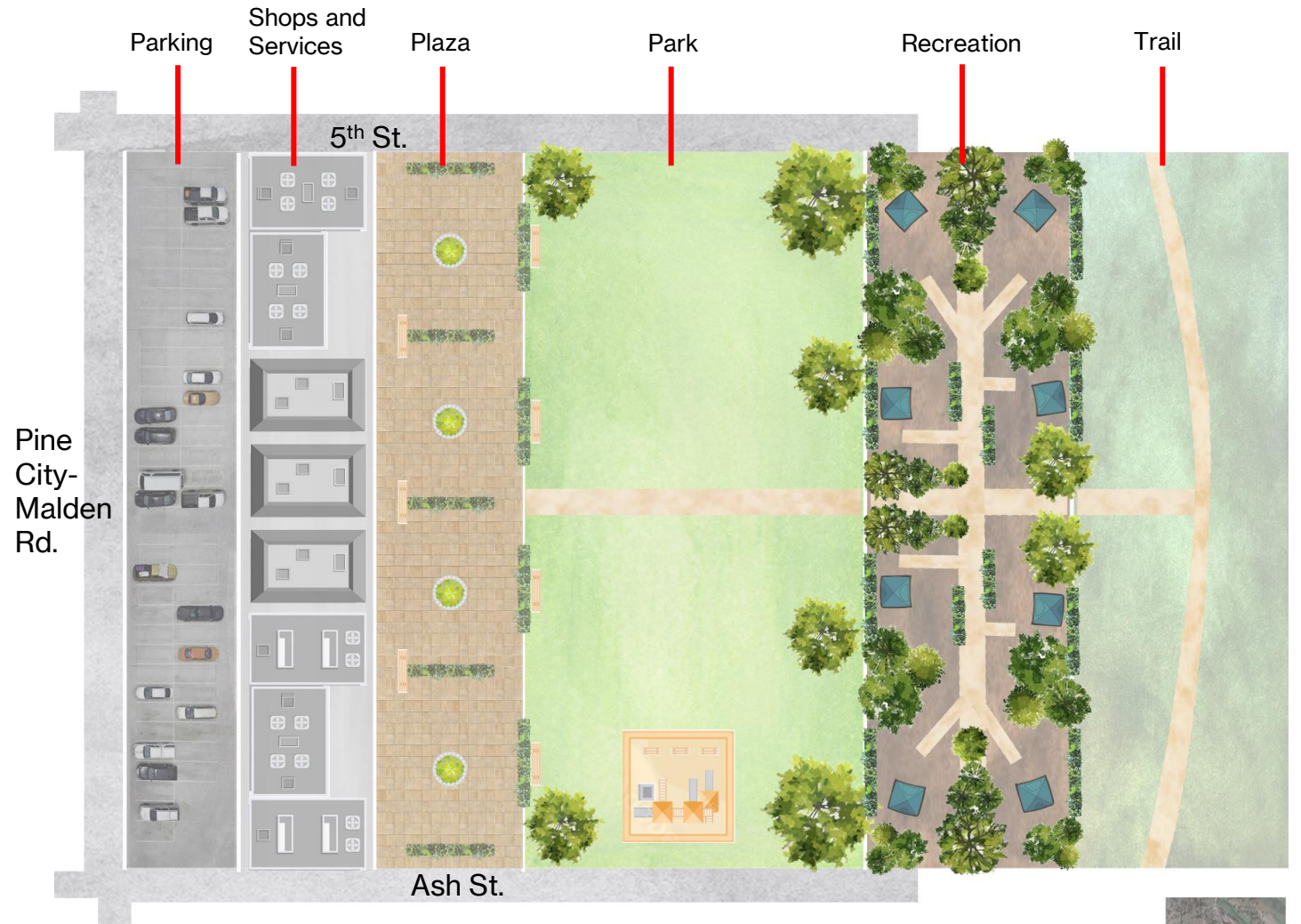
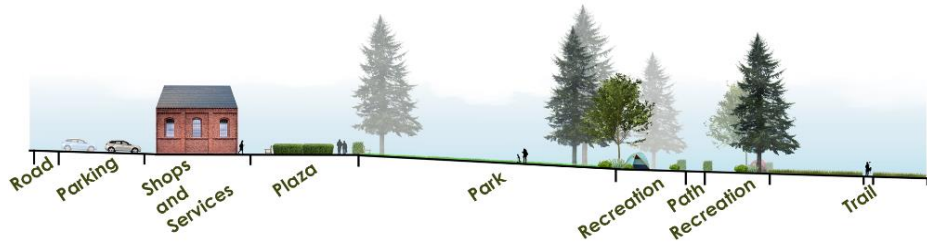


PROGRAMS OF INTEREST

- PLAZA
- PARK
- SHOPS
- SERVICES
- PARKING
- RECREATION
- TRAIL ACCESS

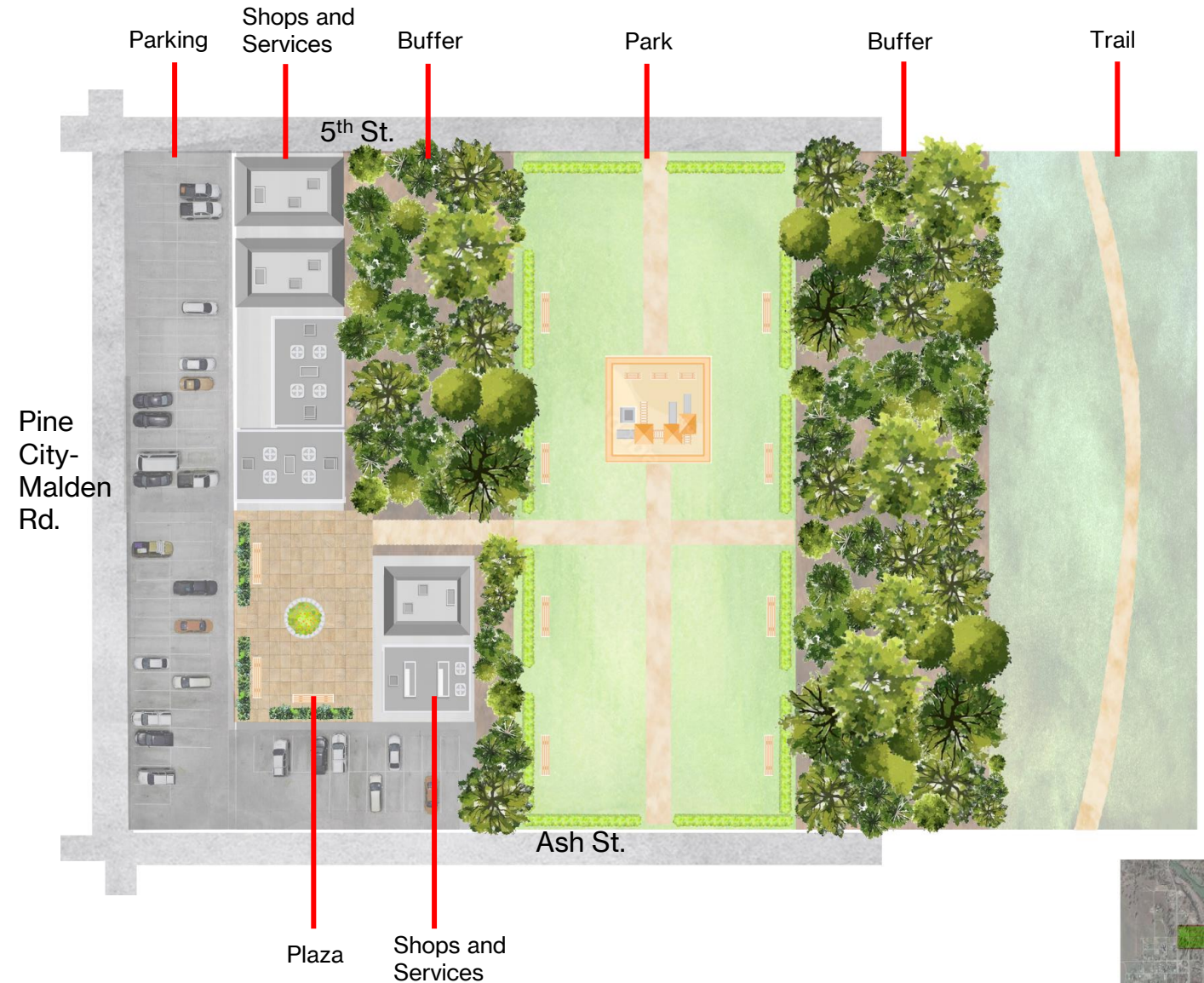
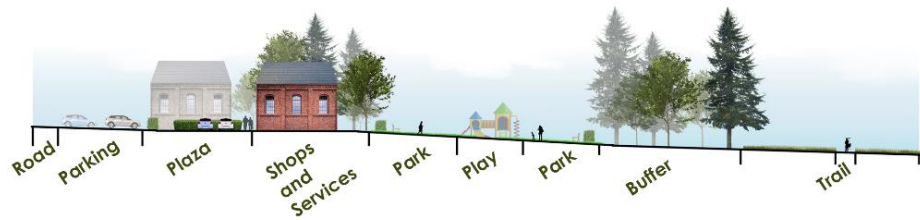
MODEST

- Small in size, simple but nice, plain.



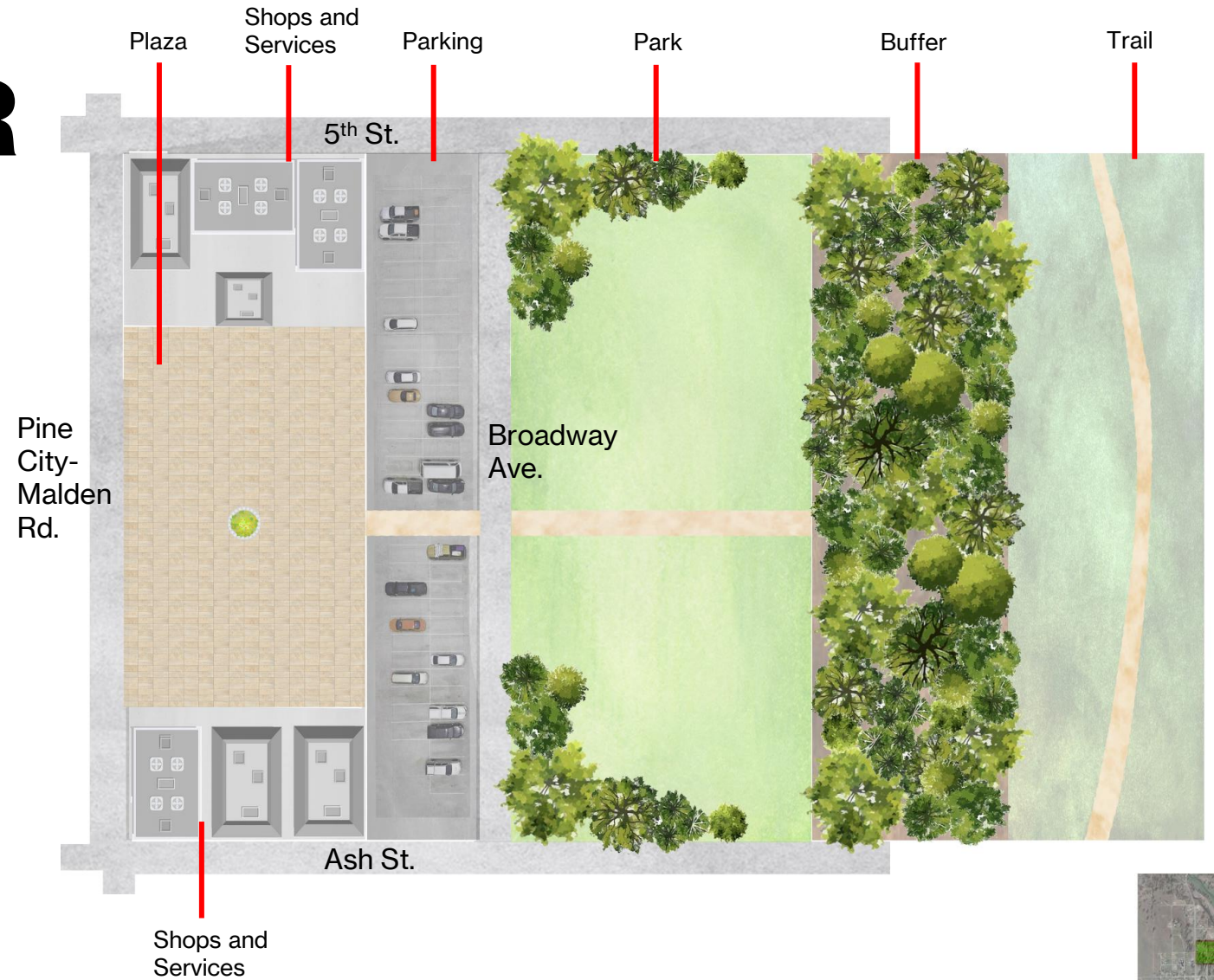
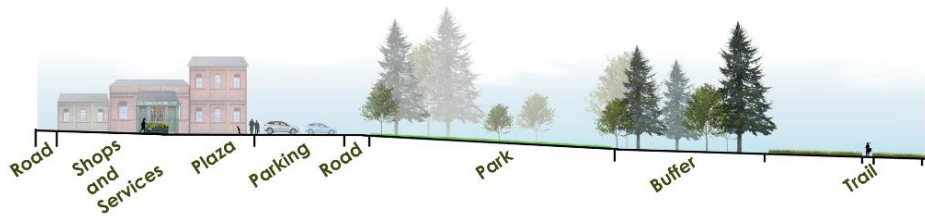
ALIENATED

- To feel separated from, distanced, excluded.



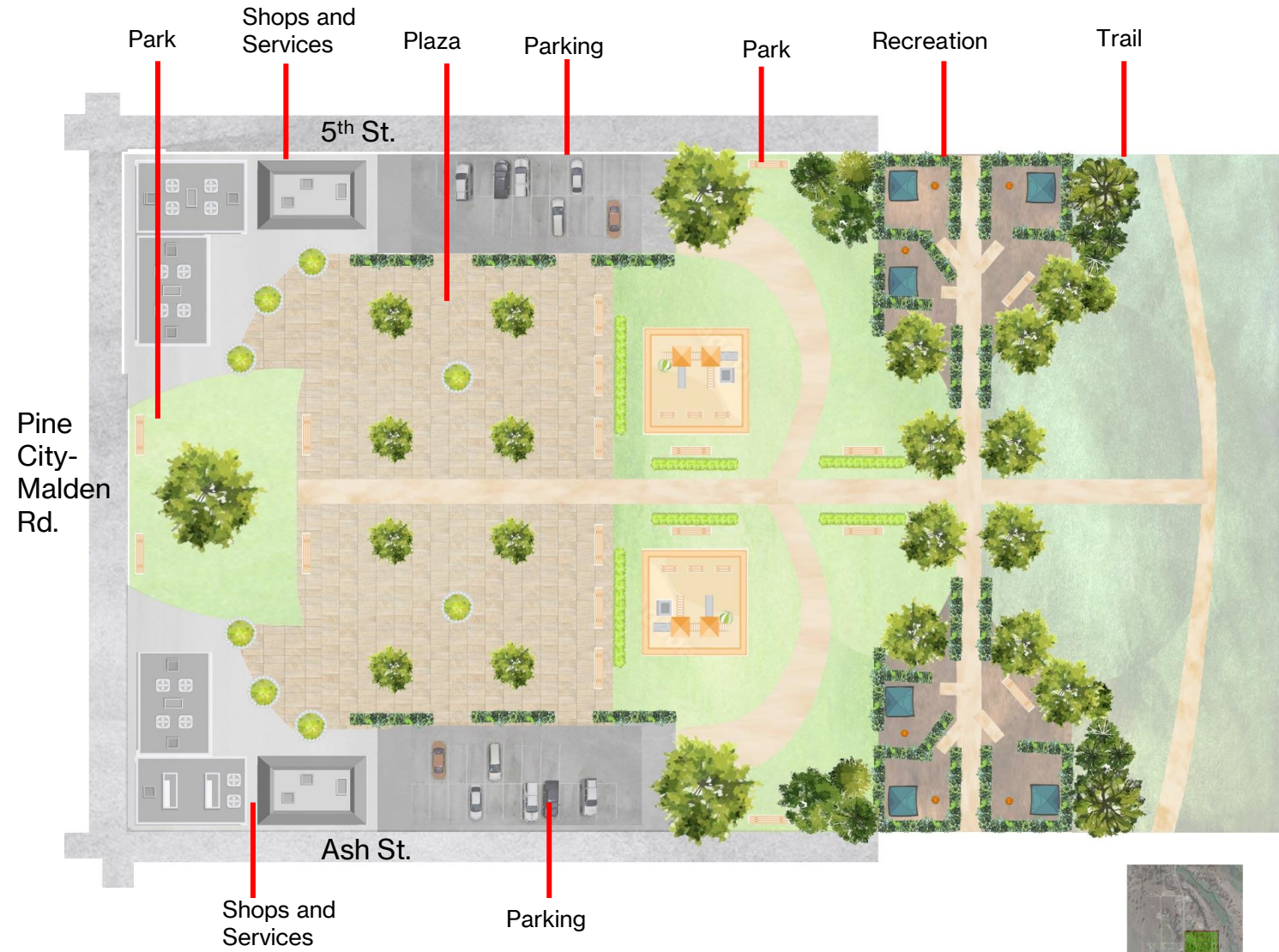
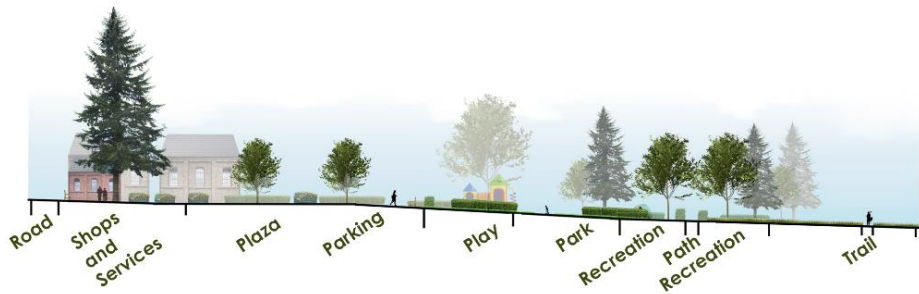
LACKLUSTER

- Lacking excitement or interest, boring.



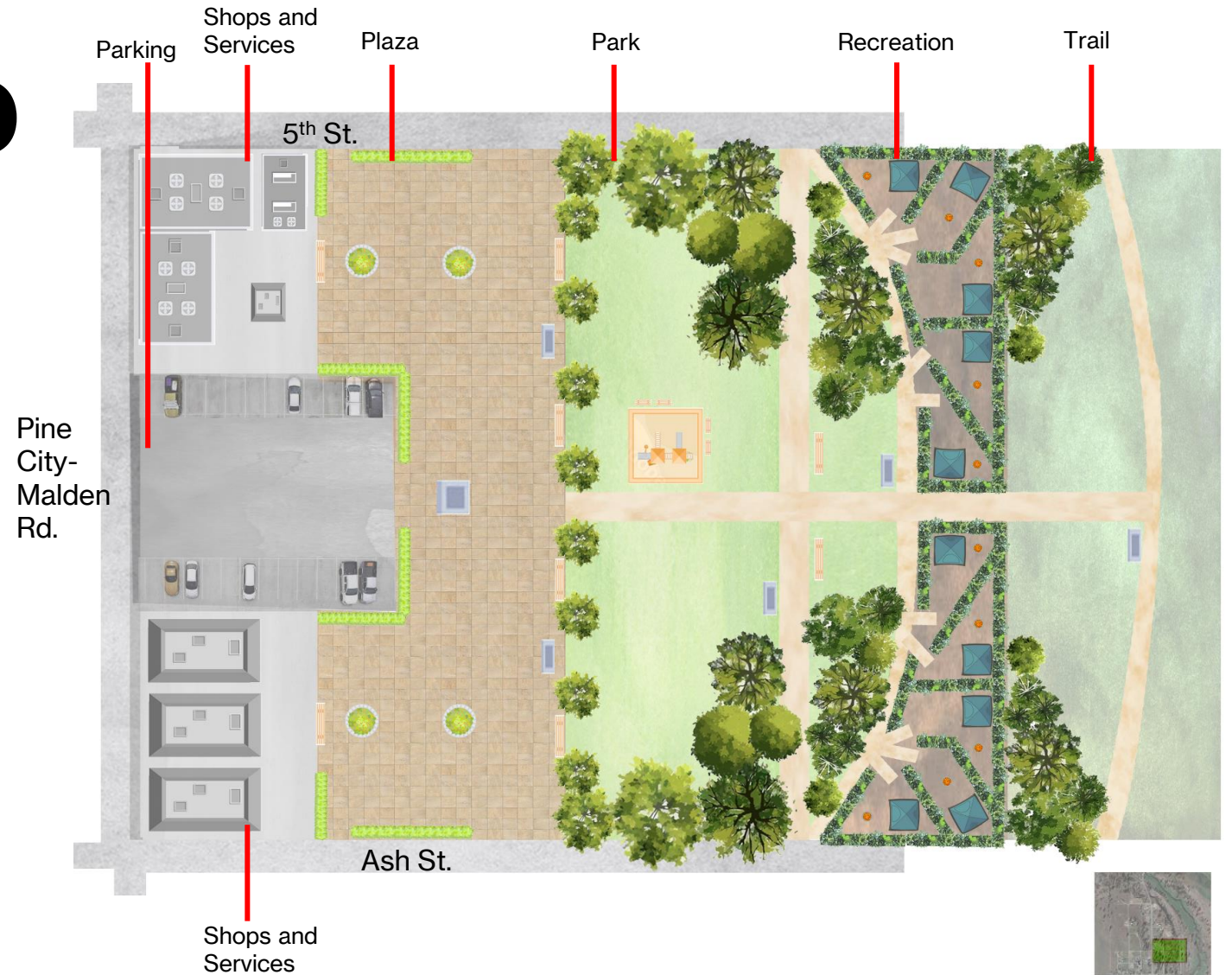
DIGNIFIED

- Serious and somewhat formal, proud, honorable.



EMBOLDENED

- The courage or confidence to do something; instilled with boldness, courage, or resolution; to inspire.



NOSTALGIC

- A yearning for happiness felt in a former place, time, or situation. Honor the past people, places, and events.

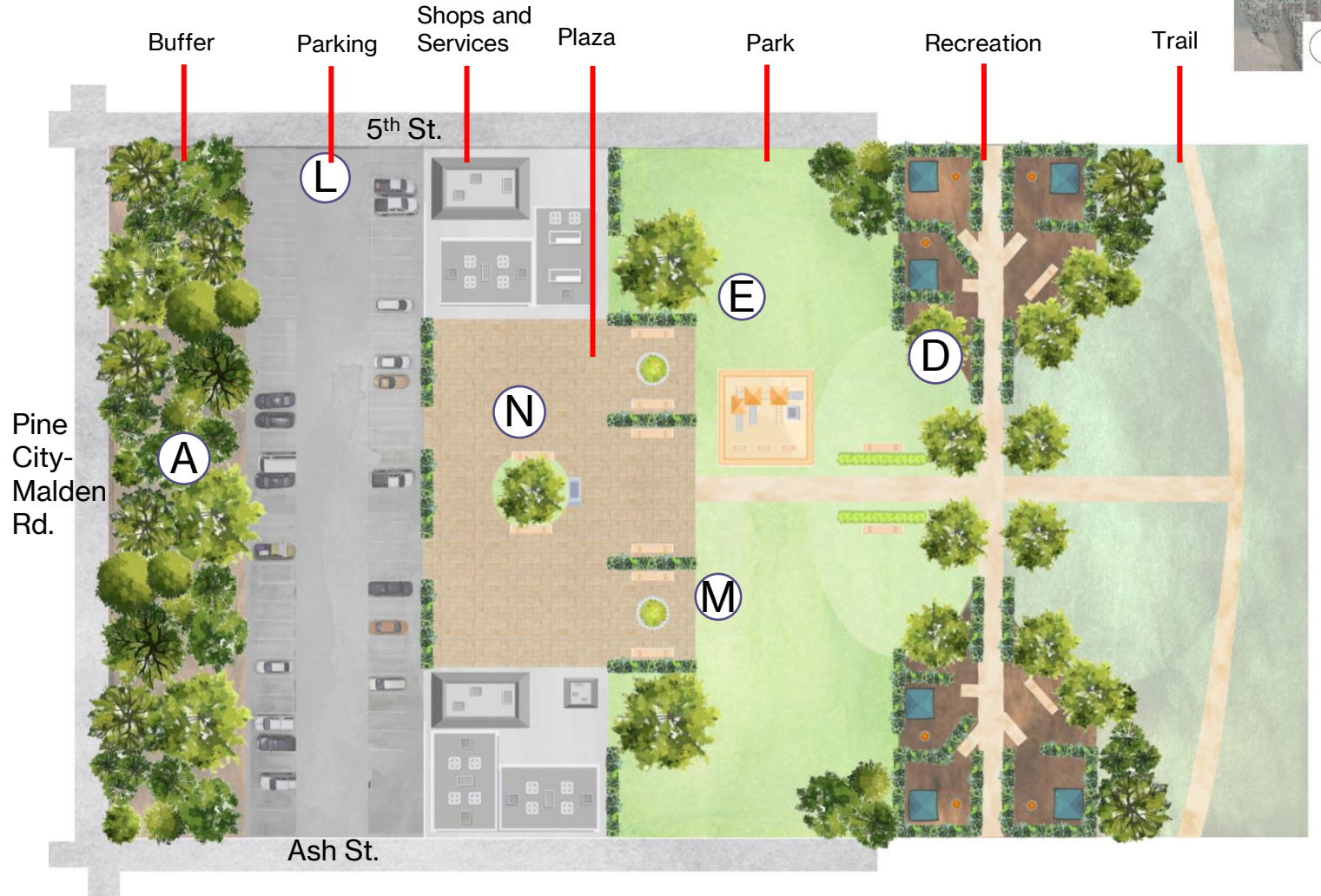
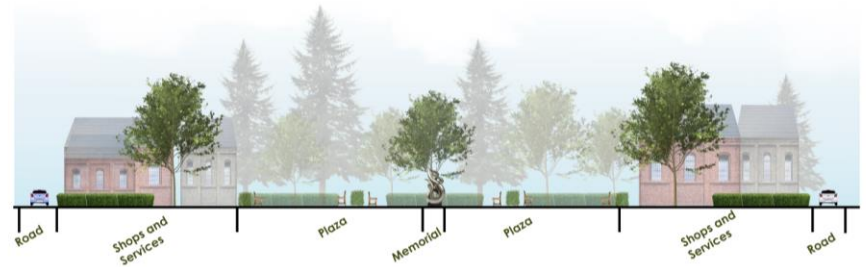


M.A.L.D.E.N.

Section A



Section B



Design Key



MODEST



ALIENATED



LACKLUSTER



DIGNIFIED



EMBOLDENED



NOSTALGIC



THANK YOU